

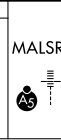
WAAS CH <b>72906</b> <b>W18A</b>	APP CRS <b>185°</b>	Rwy Idg TDZE Apt Elev	<b>9801</b> <b>609</b> <b>629</b>
--	------------------------	-----------------------------	---

# RNAV (GPS) RWY 18L

HUNTSVILLE INTL-CARL T JONES FLD (HSV)

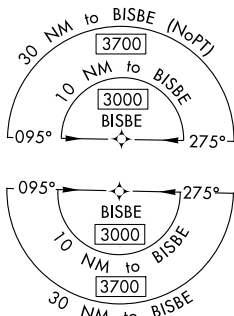
RNP APCH - GPS

**ASR** For uncompensated Baro-VNAV systems, LNAV/VNAV NA below -9°C or above 54°C. Circling NA for Cats C/D/E east of Rwy 18L-36R. For inop ALS, increase LPV Cat E visibility to RVR 4000, LNAV/VNAV Cat E visibility to 1½ SM, and LNAV Cat E visibility to 1¼ SM. Simultaneous approach authorized. LNAV procedure NA during simultaneous operations. Use of FD or AP required during simultaneous operations. \* RVR 1800 authorized with use of FD or AP or HUD to DA.



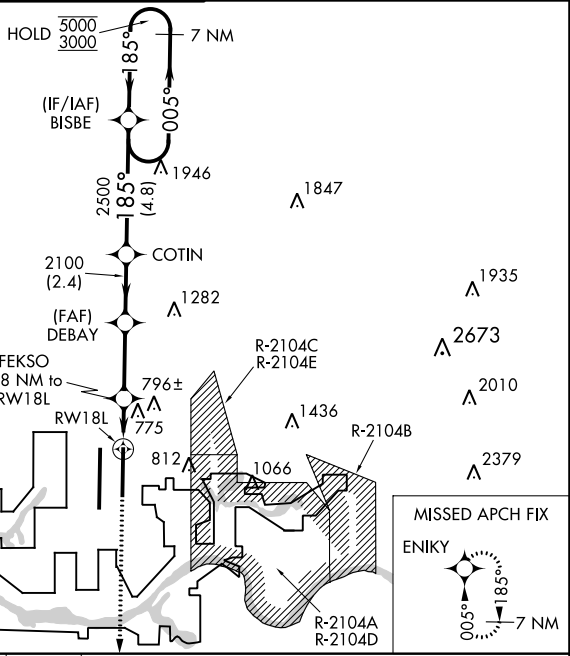
**MISSED APPROACH:**  
Climb to 3000 direct ENIKY and hold.

ATIS <b>121.25</b>	HUNTSVILLE APP CON * <b>125.6 354.1</b>	HUNTSVILLE TOWER * <b>127.6 (CTAF) 350.35</b>	GND CON <b>121.9 269.525</b>	CLNC DEL <b>120.35</b>	UNICOM <b>122.95</b>
-----------------------	--	--	---------------------------------	---------------------------	-------------------------

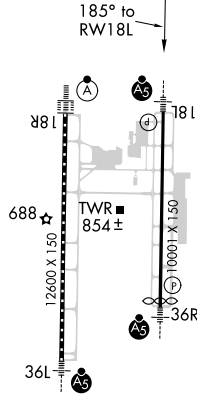


**CAUTION:** Numerous migratory bird flocks in area. Wildlife Refuge Area south of airport.

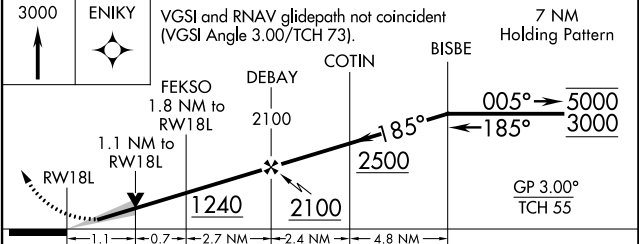
WHEELER NATIONAL WILDLIFE REFUGE



ELEV 629 **D** TDZE 609



TDZ/CL Rwy 18R and 36L  
HIRL Rwy 18L-36R and 18R-36L



CATEGORY	A	B	C	D	E
LPV DA*	809/24		200 (200-½)		
LNAV/VNAV DA	1057/45 448 (500-¾)				
LNAV MDA	1040/24 431 (500-½)		1040/40 431 (500-¾)		
<b>C</b> CIRCLING	1160-1 531 (600-1)		1160-1½ 531 (600-1½)	1240-2 611 (700-2)	1260-2¼ 631 (700-2¼)

SE-4, 28 NOV 2024 to 26 DEC 2024

SE-4, 28 NOV 2024 to 26 DEC 2024