

| | | |
|--|------------------------|---|
| WAAS CH 86606 W36B | APP CRS 005° | Rwy Idg 9801 TDZE 595 Apt Elev 629 |
|--|------------------------|---|

RNAV (GPS) RWY 36R

HUNTSVILLE INTL-CARL T JONES FLD (HSV)

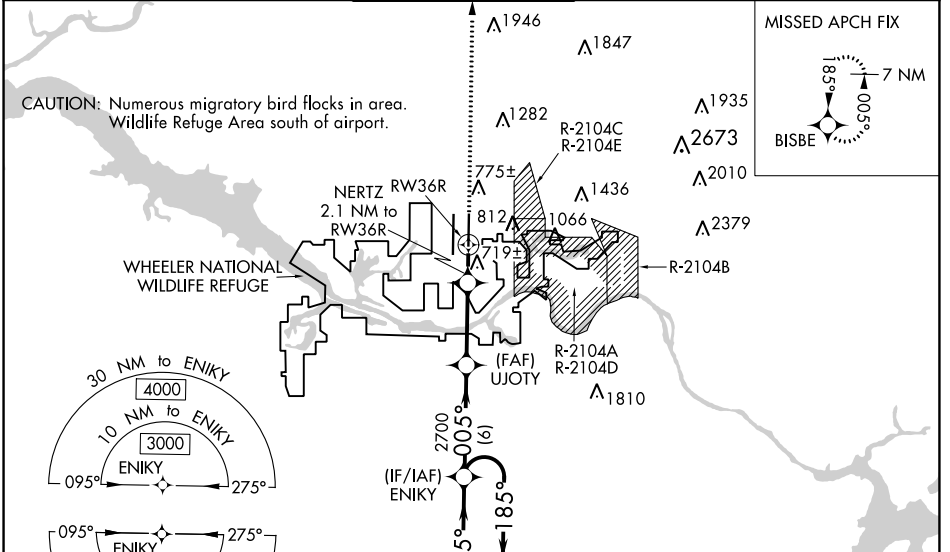
RNP APCH - GPS.

ASR Circling NA for Cats C/D/E east of Rwy 18L-36R. For uncompensated Baro-VNAV systems, LNAV/VNAV NA below -9°C or above 54°C. Simultaneous approach authorized. LNAV procedure NA during simultaneous operations. Use of FD or AP required during simultaneous operations. For inop ALS increase LPV Cat E visibility to RVR 4000, LNAV/VNAV Cat E visibility to RVR 5000 and LNAV Cat E visibility to RVR 6000.

MALSRL

MISSED APPROACH: Climb to 3000 direct BISBE and hold.

| | | | | | |
|-----------------------|--|--|---------------------------------|---------------------------|-------------------------|
| ATIS 121.25 | HUNTSVILLE APP CON * 125.6 354.1 | HUNTSVILLE TOWER * 127.6 (CTAF) 0 350.35 | GND CON 121.9 269.525 | CLNC DEL 120.35 | UNICOM 122.95 |
|-----------------------|--|--|---------------------------------|---------------------------|-------------------------|



| | |
|------------------------------|-------------------|
| ELEV 629 | D TDZE 595 |
| TDZ/CL Rws 18R and 36L | |
| HIRL Rws 18L-36R and 18R-36L | |

7 NM Holding Pattern ENIKY

VGSI and RNAV glidepath not coincident (VGSI Angle 3.00/TCH 72).

3000 BISBE

5000 185°

3000 005°

GP 3.00° TCH 55

2700

1300

6 NM 4 NM 1.1 NM 1 NM

UJOTY

NERTZ 2.1 NM to RW36R

1 NM to RW36R

RW36R

812

781

688

TWR 854±

12400 X 150

1000L X 150

36L

36R

005° to RW36R

| CATEGORY | A | B | C | D | E |
|-------------------|--------|---------------|-------------------------------|-----------------------|-------------------------------|
| LPV DA | | 818/24 | 223 (200-1/2) | | |
| LNAV/DA | | 939/30 | 344 (400-5/8) | | |
| LNAV MDA | 980/24 | 385 (400-1/2) | 980/35 | 385 (400-5/8) | |
| C CIRCLING | 1160-1 | 531 (600-1) | 1160-1 1/2 531 (600-1 1/2) | 1240-2 611 (700-2) | 1260-2 1/4 631 (700-2 1/4) |

SE-4, 28 NOV 2024 to 26 DEC 2024

SE-4, 28 NOV 2024 to 26 DEC 2024