

WAAS CH 86836 W17A	APP CRS 174°	Rwy Idg TDZE Apt Elev	5506 1158 1160
--	------------------------	-----------------------------	---

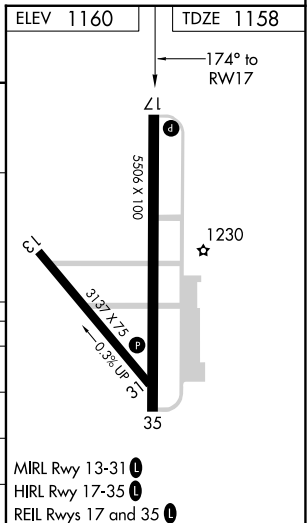
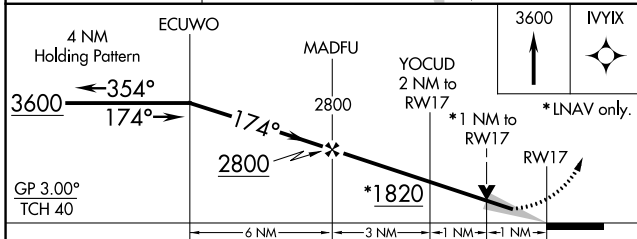
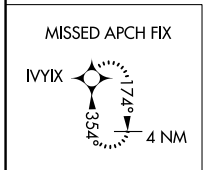
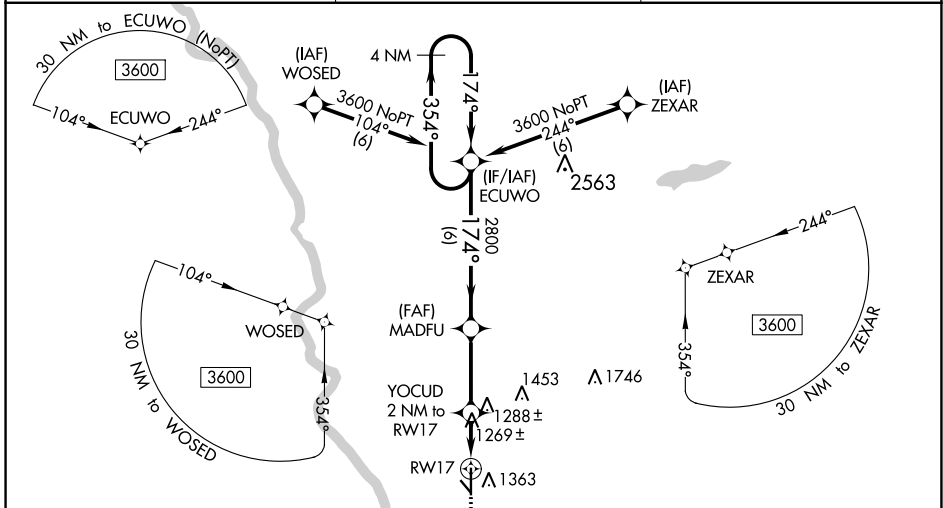
RNAV (GPS) RWY 17

STROTHER FLD (WLD)

▽ DME/DME RNP-0.3 NA. For uncompensated Baro-VNAV systems, LNAV/VNAV NA below -15°C (5°F) or above 54°C (130°F). Baro-VNAV and VDP NA when using Wichita Dwight D Eisenhower Nil altimeter setting. When local altimeter setting not received, use Wichita Dwight D Eisenhower Nil setting and increase all DA 104 feet and all MDA 120 feet; increase LPV, LNAV/VNAV all Cats and LNAV Cat C visibility 3/8 mile; increase Circling Cat C visibility 1/4 mile.

MISSED APPROACH:
Climb to 3600 direct IVYX and hold.

ASOS 118.025	KANSAS CITY CENTER 127.8 319.1	UNICOM 122.8 (CTAF) 0
------------------------	--	---------------------------------



CATEGORY	A	B	C	D
LPV DA	1408-7/8	250 (300-7/8)		NA
LNAV/VNAV DA	1419-7/8	261 (300-7/8)		NA
LNAV MDA	1520-1	362 (400-1)		NA
C CIRCLING	1680-1	520 (600-1)	1680-1 1/2 520 (600-1 1/2)	NA

NC-2, 28 NOV 2024 to 26 DEC 2024

NC-2, 28 NOV 2024 to 26 DEC 2024