

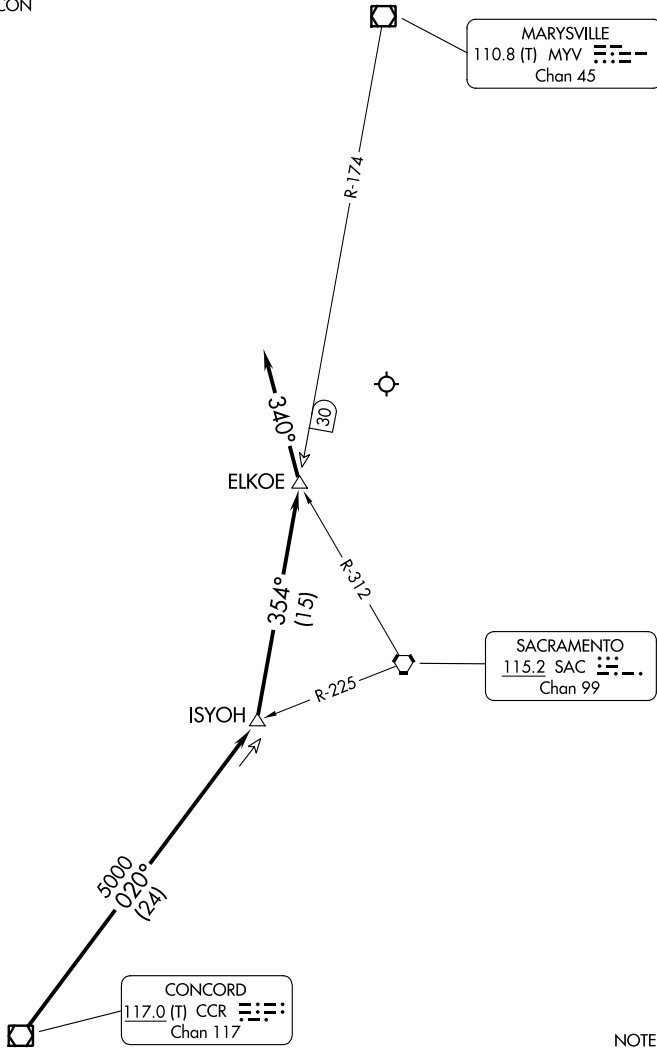
(CCR.CCR2) 24025

CONCORD TWO ARRIVAL

AL-5490 (FAA)

SACRAMENTO INTL (SMF)
SACRAMENTO, CALIFORNIA

NORCAL APP CON
125.25 257.9



NOTE: Chart not to scale.

ARRIVAL ROUTE DESCRIPTION

From over CCR VOR/DME via CCR R-020 to ISYOH INT, then via MYV R-174 to ELKOE INT, then on heading 340°. Expect RADAR vectors to final approach course.

CONCORD TWO ARRIVAL

(CCR.CCR2) 15NOV12

SACRAMENTO, CALIFORNIA
SACRAMENTO INTL (SMF)

SW-2, 28 NOV 2024 to 26 DEC 2024

SW-2, 28 NOV 2024 to 26 DEC 2024