

LOC/DME I-MDK <b>111.75</b> Chan 54 (Y)	APP CRS <b>168°</b>	Rwy ldg <b>8605</b> TDZE <b>27</b> Apt Elev <b>27</b>
---	------------------------	---

# ILS RWY 17L (SA CAT II)

SACRAMENTO INTL (SMF)

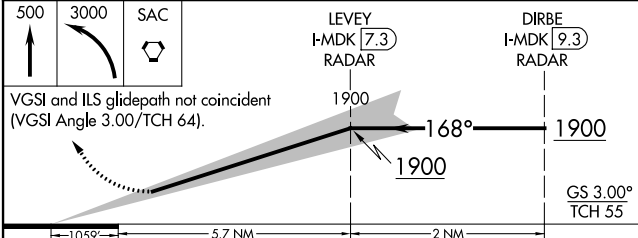
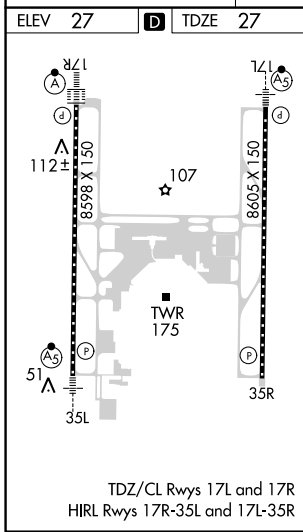
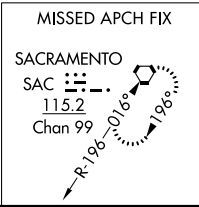
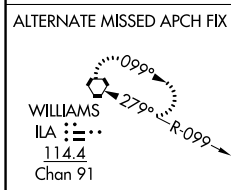
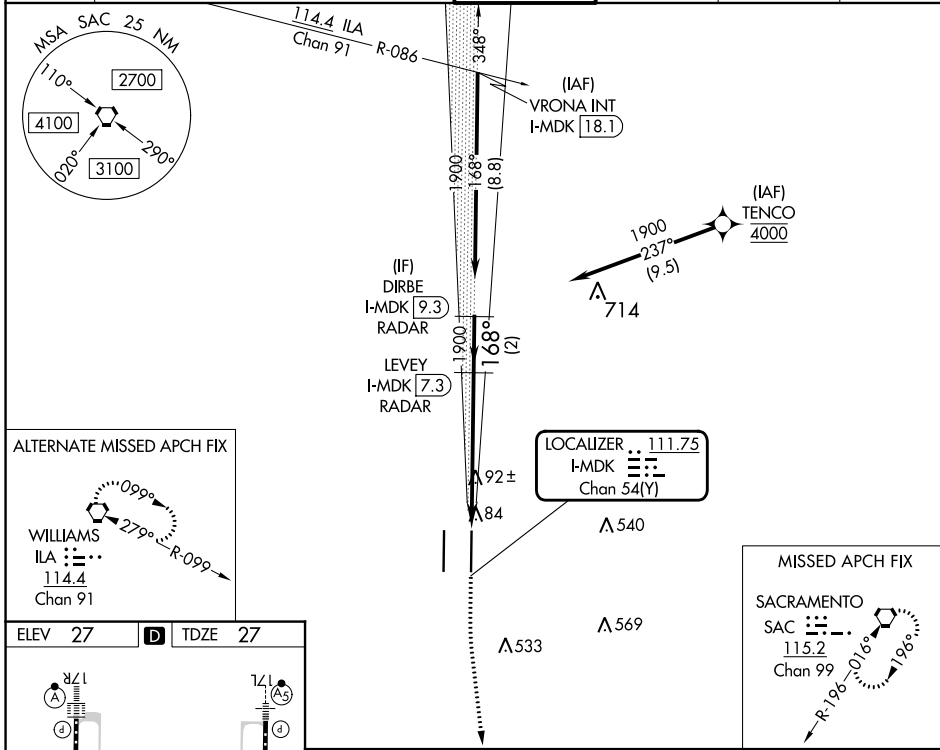
Aircraft not GPS equipped - RADAR required for procedure entry. DME or RADAR required. RNP APCH-GPS. From TENCO.

Simultaneous approach authorized. Requires specific OPSPEC, MSPEC or LOA approval.



MISSED APPROACH: Climb to 500 then climbing left turn to 3000 direct SAC VORTAC and hold.

D-ATIS <b>126.75</b>	NORCAL APP CON <b>125.4 259.1 (W-NE)</b> <b>127.4 317.5 (E-SE)</b>	<b>125.25 257.9 (SW)</b>	CAPITOL TOWER <b>125.7 256.7</b>	GND CON <b>121.7 256.7</b>	CLNC DEL <b>121.1 256.7</b>	CPDLC
-------------------------	--	--------------------------	-------------------------------------	-------------------------------	--------------------------------	-------



500	3000	SAC
-----	------	-----

CATEGORY	A	B	C	D
S-ILS 17L	RA 108/12 100 DA 127			

**SA CATEGORY II ILS-SPECIAL AIRCREW & AIRCRAFT CERTIFICATION REQUIRED**

SW-2, 28 NOV 2024 to 26 DEC 2024

SW-2, 28 NOV 2024 to 26 DEC 2024