

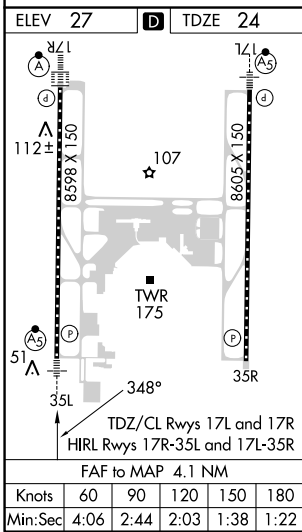
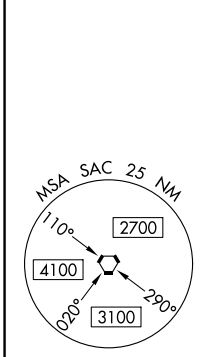
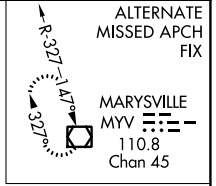
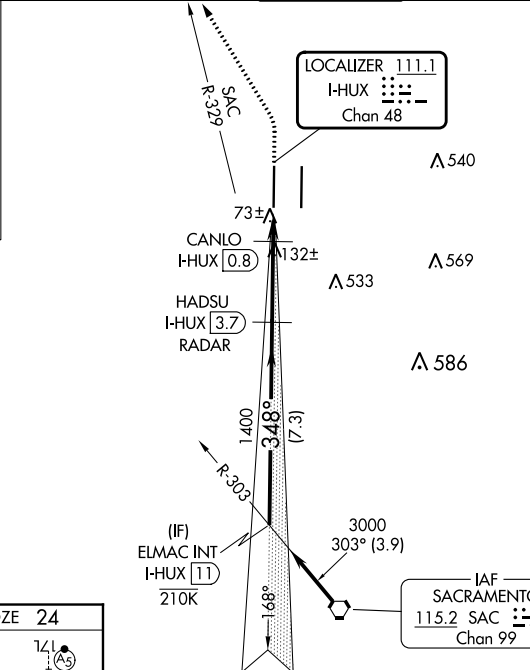
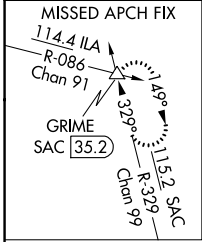
LOC/DME I-HUX 111.1 Chan 48	APP CRS 348°	Rwy Idg 8598 TDZE 24 Apt Elev 27
---	------------------------	---

ILS or LOC RWY 35L

SACRAMENTO INTL (SMF)

DME required. ▼ Circling NA east of Rwy 17R-35L. Autopilot coupled approach NA below 312 MSL. For inop ALS, increase S-LOC 35L Cats C/D visibility to RVR 4500. *RVR 1800 authorized with the use of FD or AP or HUD to DA.	MALSR 	MISSED APPROACH: Climb to 500 then climbing left turn to 2000 on heading 320° and SAC VORTAC R-329 to GRIME INT/SAC 35.2 DME and hold.
---	-----------	--

D-ATIS 126.75	NORCAL APP CON 125.4 259.1 (W-NE) 125.25 257.9 (SW) 127.4 317.5 (E-SE)	CAPITOL TOWER 125.7 256.7	GND CON 121.7 256.7	CLNC DEL 121.1 256.7	CPDLC
-------------------------	---	-------------------------------------	-------------------------------	--------------------------------	-------



Procedure NA for arrivals on SAC VORTAC airway radials 257 CW 329.

VGSI and ILS glidepath not coincident (VGSI Angle 3.00/TCH 76).

ELMAC I-HUX 11	HADSU I-HUX 3.7	RADAR	I-HUX DME ANTENNA	GRIME
3000	1400	480		
GS 3.00°	TCH 59	7.3 NM	2.9 NM	1.3 NM
CATEGORY	A	B	C	D
S-ILS 35L*	224/24		200 (200-1/2)	
S-LOC 35L	340/24		316 (400-1/2)	
<input checked="" type="checkbox"/> CIRCLING	440-1 413 (500-1)	480-1 453 (500-1)	480-1 1/2 453 (500-1 1/2)	580-2 553 (600-2)

SW-2, 28 NOV 2024 to 26 DEC 2024

SW-2, 28 NOV 2024 to 26 DEC 2024