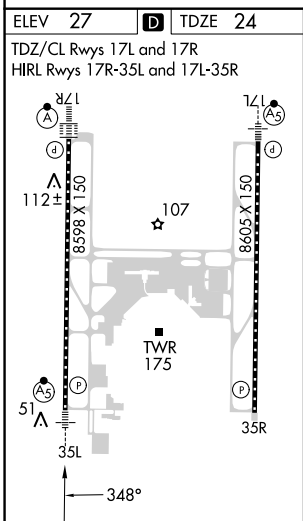
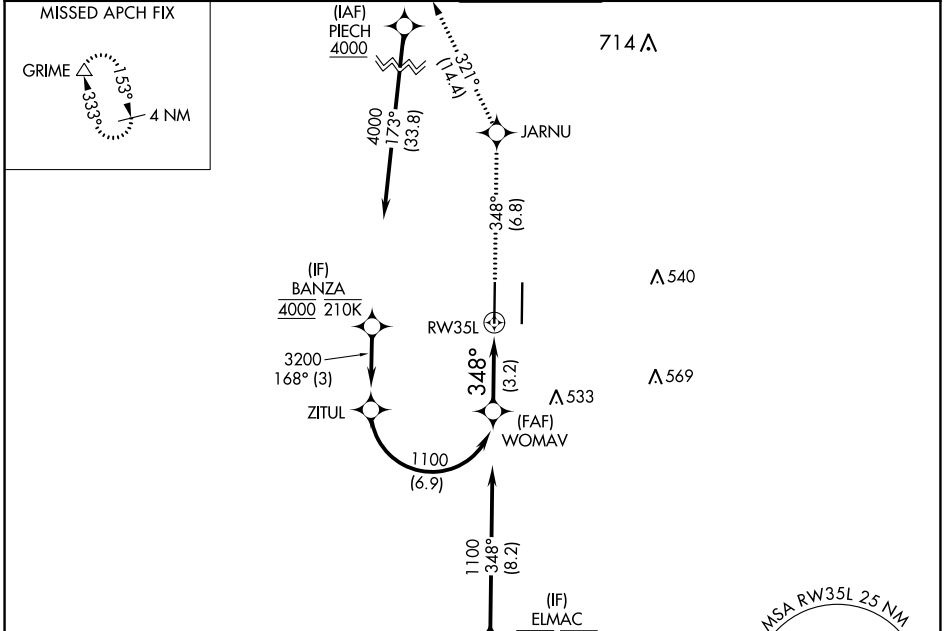


APP CRS	Rwy Idg	<b>8598</b>
<b>348°</b>	TDZE	<b>24</b>
	Apt Elev	<b>27</b>

# RNAV (RNP) Z RWY 35L

SACRAMENTO INTL (SMF)

RNP AR APCH-GPS.		MALSR	MISSED APPROACH: Climb to 2000 on track 348° to JARNU and track 321° to GRIME and hold.		
▼ For uncompensated Baro-VNAV systems, procedure NA below -2°C or above 54°C. For inop ALS, increase RNP 0.12 all Cats visibility to RVR 4500; increase RNP 0.30 all Cats visibility to RVR 5500.					
D-ATIS	NORCAL APP CON	CAPITOL TOWER	GND CON	CLNC DEL	CPDLC
<b>126.75</b>	<b>125.4 259.1 (W-NE) 125.25 257.9 (SW) 127.4 317.5 (E-SE)</b>	<b>125.7 256.7</b>	<b>121.7 256.7</b>	<b>121.1 256.7</b>	



ELEV 27	<b>D</b>	TDZE 24		
TDZ/CL Rwy 17L and 17R HIRL Rwy 17R-35L and 17L-35R				
VGSi and RNAV glidepath not coincident (VGSi Angle 3.00/TCH 76). WOMAV 1100 → RW35L 3.2 NM @ 348°				
GP 3.00°	TCH 59	2000		
		JARNU		
		GRIME		
		tr 348°		
		tr 321°		
See planview for multiple IF locations.				
1100	348°	RW35L		
3.2 NM				
CATEGORY	A	B	C	D
RNP 0.12 DA	318/24		294 (300-½)	
RNP 0.30 DA	382/30		358 (400-¾)	
<b>AUTHORIZATION REQUIRED</b>				

SW-2, 28 NOV 2024 to 26 DEC 2024

SW-2, 28 NOV 2024 to 26 DEC 2024