

# SLMMR FIVE ARRIVAL (RNAV)

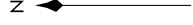
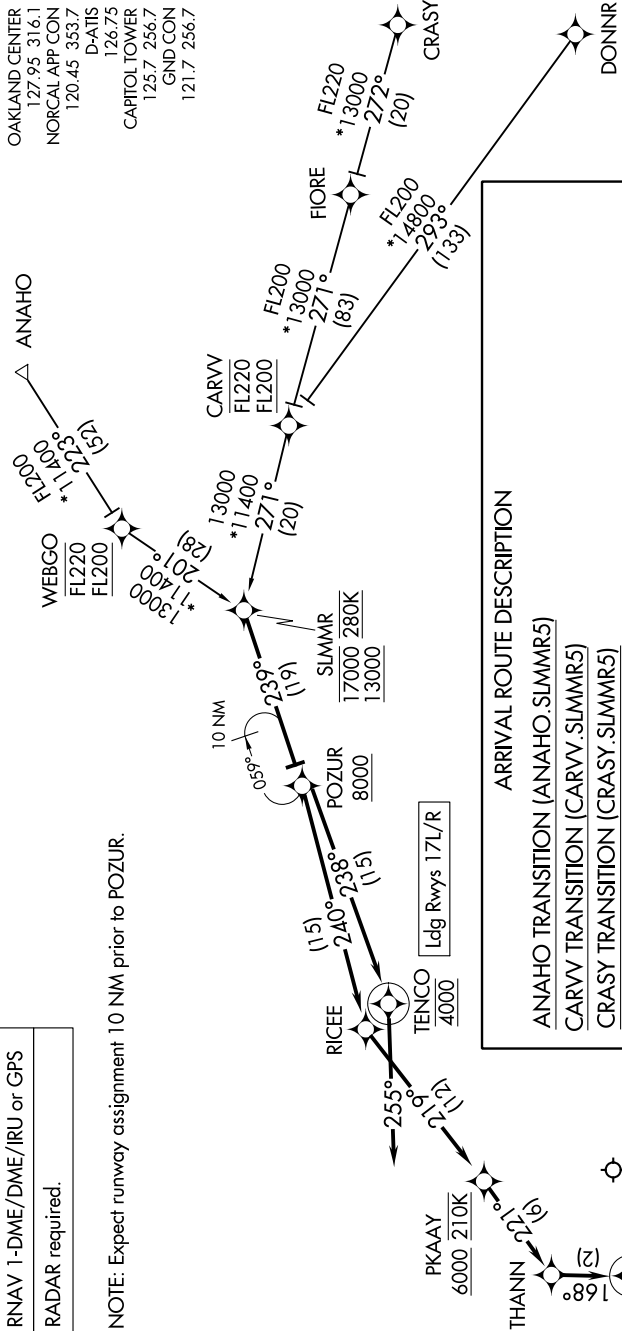
AL-5490 (FAA)

SACRAMENTO INTL (SMF)  
SACRAMENTO, CALIFORNIA

SW-2, 28 NOV 2024 to 26 DEC 2024

RNAV 1-DME/DME/IRU or GPS  
RADAR required.

NOTE: Expect runway assignment 10 NM prior to POZUR.



**ARRIVAL ROUTE DESCRIPTION**

ANAHO TRANSITION (ANAHO.SLMMR5)  
CARVV TRANSITION (CARVV.SLMMR5)  
CRASY TRANSITION (CRASY.SLMMR5)  
DONNR TRANSITION (DONNR.SLMMR5)  
WEBGO TRANSITION (WEBGO.SLMMR5)

From SLMMR on track 239° to cross POZUR at or above 8000.  
**LANDING RUNWAYS 17L/R:** From POZUR on track 238° to cross TENCO at 4000, then on track 255°. Expect RADAR vectors for assigned instrument approach procedure.  
**LANDING RUNWAYS 35L/R:** From POZUR on track 240° to RICEE, then on track 219° to cross PKAAY at or above 6000 and at 210K, then on track 221° to THANN, then on track 168° to cross BANZA at 4000 and at 210K, then on track 168°. Expect RADAR vectors to final approach course.

NOTE: Chart not to scale.

# SLMMR FIVE ARRIVAL (RNAV)

SW-2, 28 NOV 2024 to 26 DEC 2024