

WAAS CH 81832 W36A	APP CRS 356°	Rwy Idg TDZE Apt Elev	3100 99 103
--	------------------------	-----------------------------	--

RNAV (GPS) RWY 36

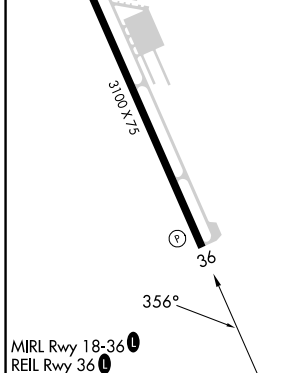
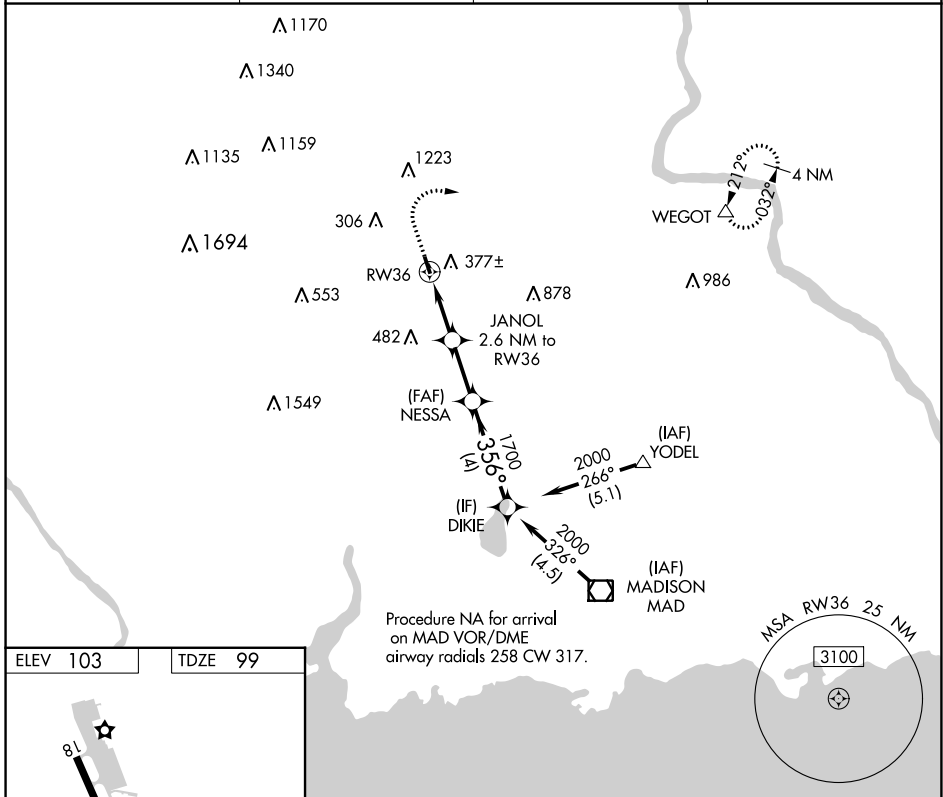
MERIDEN MARKHAM MUNI (MMK)

RNP APCH.

- Procedure NA at night.
- Rwy 36 helicopter visibility reduction below 1 SM NA.

MISSED APPROACH: Climb to 800 then climbing right turn to 2500 direct WEGOT and hold.

ASOS 134.925	BRADLEY APP CON 127.8 269.325	CLNC DEL 120.65	UNICOM 123.05 (CTAF) 1
------------------------	---	---------------------------	---



800	2500	WEGOT	Visual Segment - Obstacles.			
↑	↷	△				
		JANOL				
		2.6 NM to RWY 36				
		NESSA				
		DIKIE				
		2000				
		1700				
		960				
		2.6 NM	2.3 NM		4 NM	
CATEGORY	A	B	C	D		
LP MDA	660-1	561 (600-1)	NA			
LNAV MDA	760-1	661 (700-1)	NA			
C CIRCLING	780-1	677 (700-1)	NA			

NE-1, 28 NOV 2024 to 26 DEC 2024

NE-1, 28 NOV 2024 to 26 DEC 2024