

APP CRS	Rwy Idg	2855
230°	TDZE	142
	Apt Elev	150

RNAV (GPS) RWY 23

PINE VALLEY (19N)

RNP APCH.

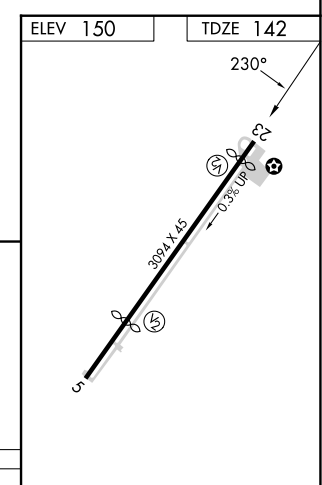
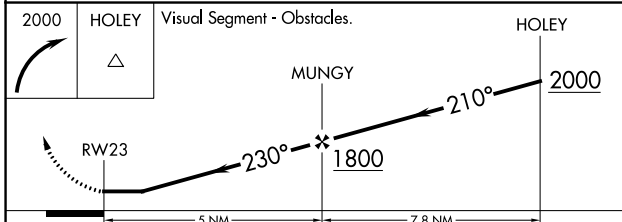
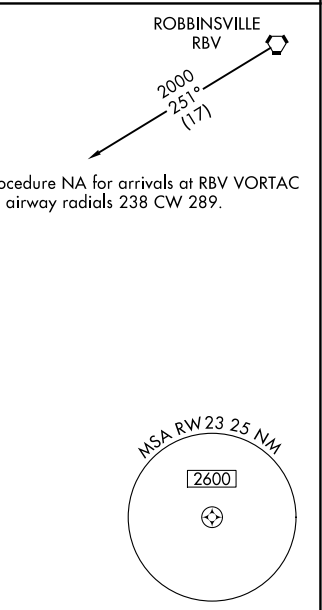
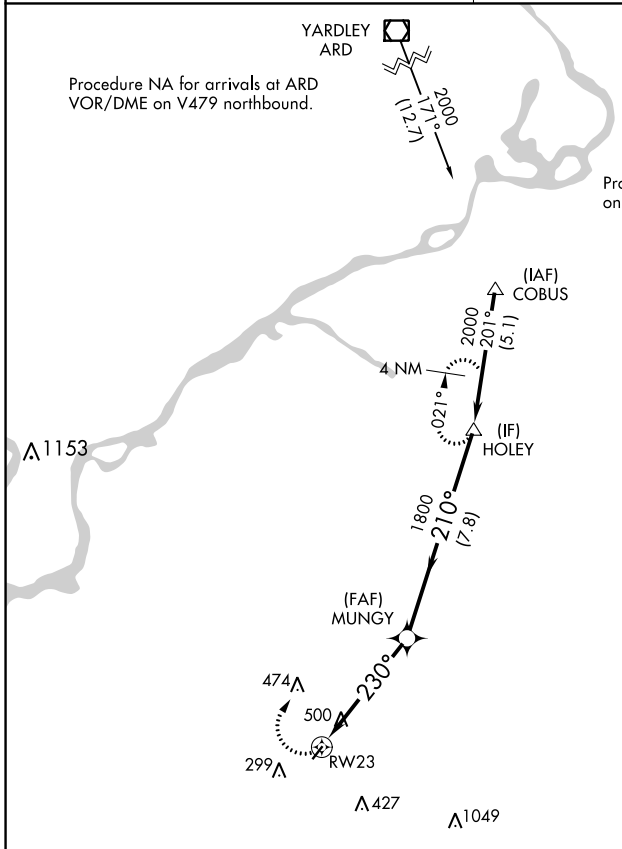
▽ Rwy 23 helicopter visibility reduction below 1 SM NA. Use Mount Holly altimeter setting; if not received use Philadelphia Intl altimeter setting and increase all MDA 20 feet. Procedure NA at night.

△ NA

MISSED APPROACH: Climbing right turn to 2000 direct HOLEY and hold.

MC GUIRE APP CON
126.475 363.8

UNICOM
123.0 (CTAF)



CATEGORY	A	B	C	D
LNAV MDA	840-1	698 (700-1)		NA

REIL Rwy 5 and 23 **①**
MIRL Rwy 5-23 **①**

NE-2, 28 NOV 2024 to 26 DEC 2024

NE-2, 28 NOV 2024 to 26 DEC 2024