

LOC/DME I-OYM 108.9 Chan 26	APP CRS 281°	Rwy Idg TDZE Apt Elev 4300 1934 1934
--	------------------------	--

LOC RWY 28
ST MARYS MUNI (OYM)

DME required.

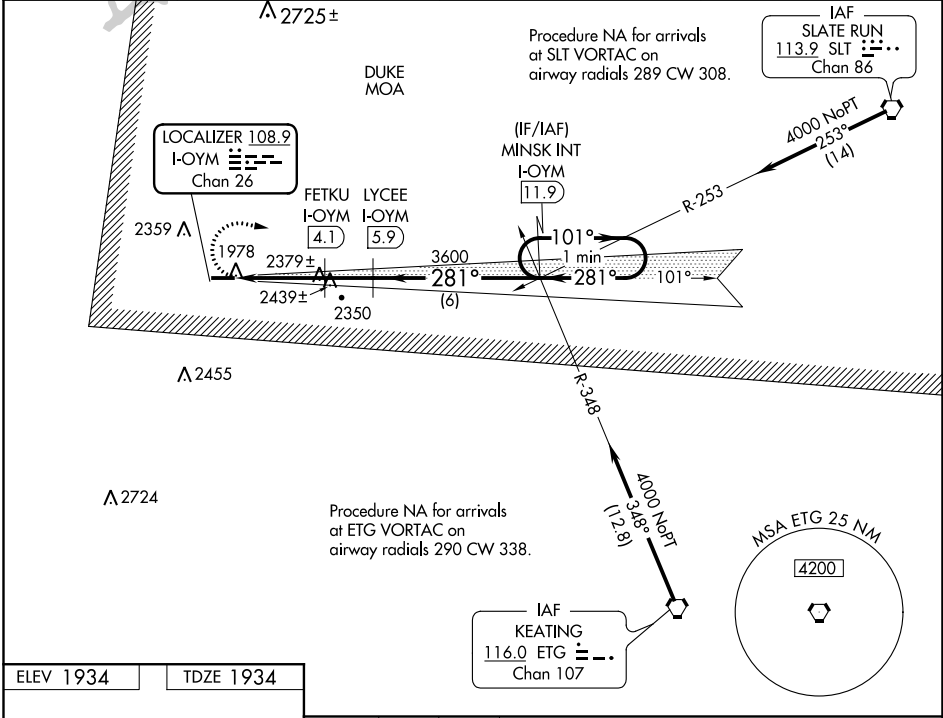
▼ Inop table does not apply to Cat A. Rwy 28 helicopter visibility reduction below 3/4 SM
 ▲ NA VDP NA when using Bradford altimeter setting. When local altimeter setting not received, use Bradford altimeter setting and increase all MDA 240 feet and S-28 Cat B visibility 1/4 SM, Cat C/D 1/2 SM and Circling Cat A 1/4 SM, Cat B 1/2 SM, Cat C 3/4 SM.
 ☁ -36°C For inop ALS, increase S-28 Cat C/D visibility to 2 1/2 SM. For inop ALS when using Bradford altimeter setting, increase S-28 Cat C/D visibility to 3 SM.

MALS



MISSED APPROACH:
Climbing right turn to 4000 on I-OYM east course to MINSK INT/ 11.9 DME and hold.

AWOS-3P 118.05	CLEVELAND CENTER 126.725 291.65	ALTOONA CLNC DEL 122.4	UNICOM 122.7 (CTAF)
--------------------------	---	----------------------------------	-------------------------------



NE-4, 28 NOV 2024 to 26 DEC 2024

NE-4, 28 NOV 2024 to 26 DEC 2024

ELEV 1934	TDZE 1934
-----------	-----------

