

WAAS CH 49223 W10A	APP CRS 102°	Rwy Idg TDZE Apt Elev	5060 974 974
--	------------------------	-----------------------------	---

RNAV (GPS) RWY 10

POLK COUNTY/CORNELIUS MOORE FLD (4A4)

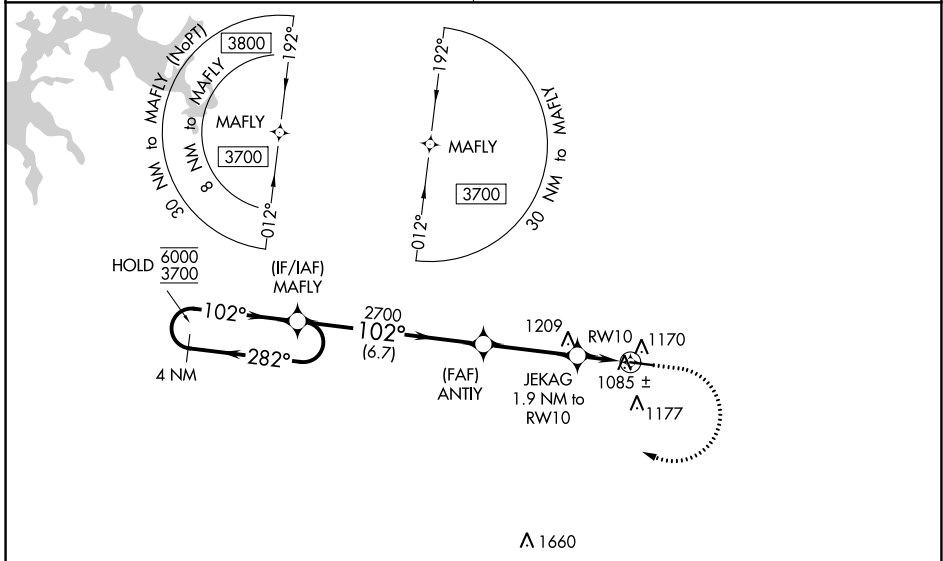
RNP APCH.

∇ Baro-VNAV and VDP NA when using Cartersville altimeter setting.
⚠ NA For uncompensated Baro-VNAV systems, LNAV/VNAV NA below -8°C or above 54°C. Obtain local altimeter setting on CTAF, when not received, use Cartersville altimeter setting and increase LPV DA to 1292 feet; increase LNAV/VNAV DA to 1424 feet and all visibilities ¼ SM; increase all MDA 80 feet; increase LNAV visibility Cats C and D ⅜ SM.

MISSED APPROACH: Climb to 1600 then climbing right turn to 3700 direct MAFLY and hold.

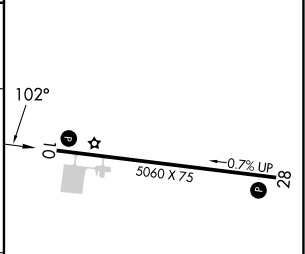
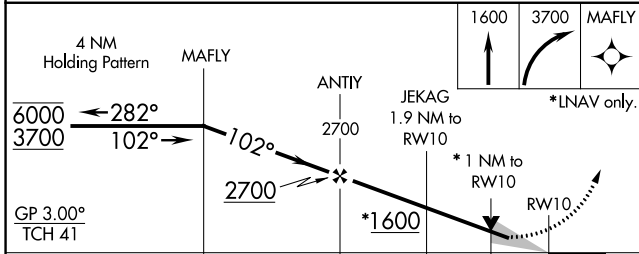
ATLANTA CENTER
124.5 270.325

UNICOM
122.8 (CTAF) 0



• 2140

ELEV 974	TDZE 974
----------	----------



CATEGORY	A	B	C	D
LPV DA		1224-1	250 (300-1)	
LNAV/VNAV DA		1356-1½	382 (400-1½)	
LNAV MDA		1340-1	366 (400-1)	

