

WAAS CH <b>69638</b> <b>W18A</b>	APP CRS <b>182°</b>	Rwy Idg <b>4002</b> TDZE <b>541</b> Apt Elev <b>541</b>
--	------------------------	---

# RNAV (GPS) RWY 18

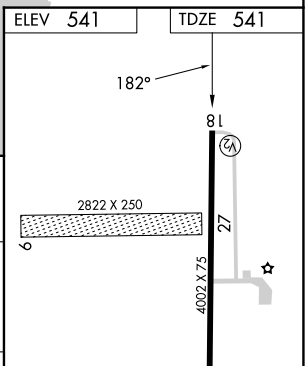
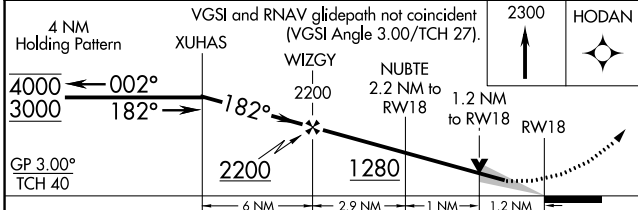
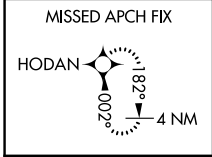
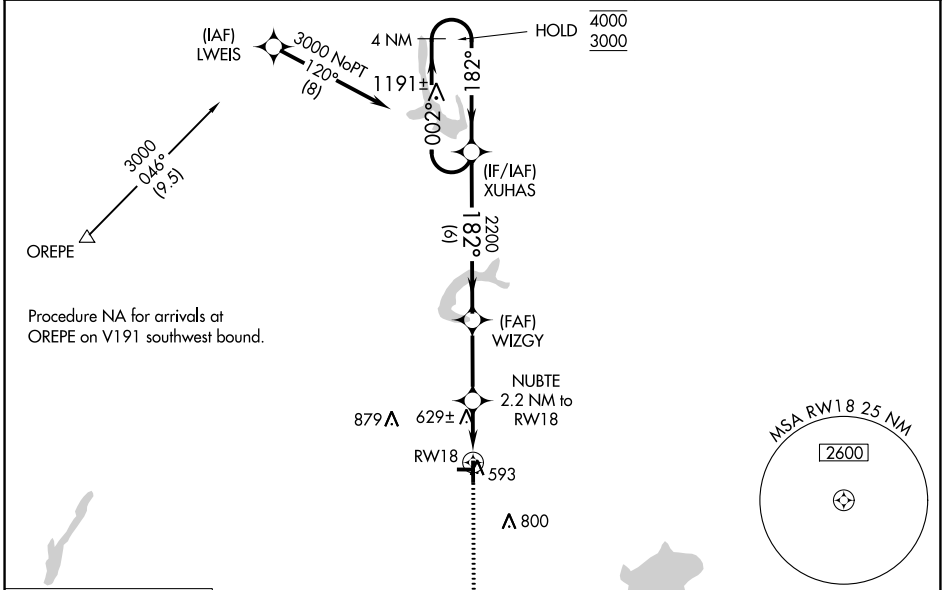
GREENVILLE (G.R.E)

RNP APCH - GPS.

**NA** Circling NA to Rwys 9 and 27. Baro-VNAV and VDP NA when using Salem altimeter setting. For uncompensated Baro-VNAV systems, LNAV/VNAV NA below -16°C or above 54°C. Procedure NA at night. When local altimeter setting not received, use Salem altimeter setting and increase LPV DA to 905 feet; increase LNAV/VNAV DA to 905 feet; increase all MDAs 60 feet and LNAV visibility Cat C/D ¼ SM, and Circling visibility Cat D ¼ SM.

**MISSED APPROACH:** Climb to 2300 direct HODAN and hold.

AWOS-AV <b>123.05</b>	KANSAS CITY CENTER <b>127.7 351.825</b>	UNICOM <b>123.05 (CTAF) 0</b>
--------------------------	--	----------------------------------



CATEGORY	A	B	C	D
LPV DA		848-1	307 (400-1)	
LNAV/VNAV DA		848-1	307 (400-1)	
LNAV MDA	940-1 399 (400-1)		940-1 399 (400-1 1/8)	
<b>CIRCLING</b>	980-1 439 (500-1)	1000-1 459 (500-1)	1220-2 679 (700-2)	1240-2 699 (700-2 1/4)

REIL Rwy 18 and 36  
MIRL Rwy 18-36 **0**

EC-3, 28 NOV 2024 to 26 DEC 2024

EC-3, 28 NOV 2024 to 26 DEC 2024