

| | | | |
|--|------------------------|---|-------------|
| WAAS CH 73038 W36A | APP CRS 002° | Rwy Idg TDZE 540 Apt Elev 541 | 4002 |
|--|------------------------|---|-------------|

RNAV (GPS) RWY 36

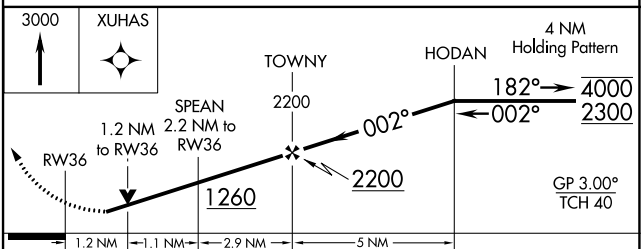
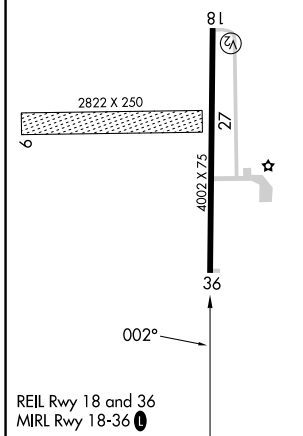
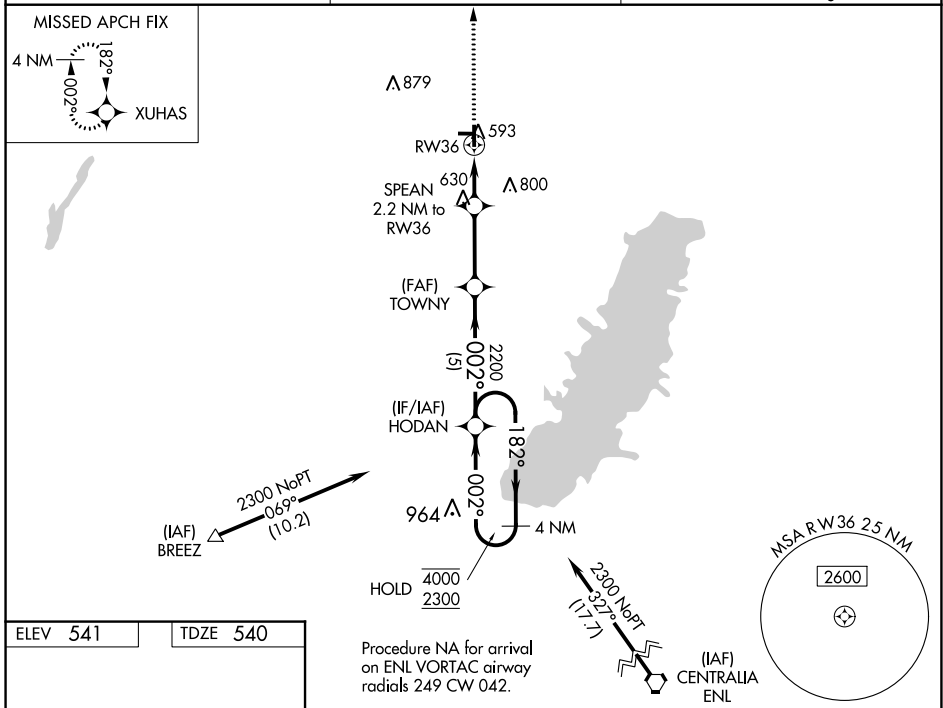
GREENVILLE (G.R.E.)

RNP APCH - GPS.

NA Rwy 36 helicopter visibility reduction below 3/4 SM NA. Circling NA to Rwy 9 and 27. Procedure NA at night. For uncompensated Baro-VNAV systems, LNAV/VNAV NA below -16°C or above 54°C. When local altimeter setting not received, use Salem altimeter setting and increase LPV DA to 910 feet; increase LNAV/VNAV DA to 904 feet; increase all MDAs 60 feet and LNAV visibility Cat C/D 1/4 SM, and Circling visibility Cat D 1/4 SM. Baro-VNAV and VDP NA when using Salem altimeter setting.

MISSED APPROACH:
Climb to 3000 direct XUHAS and hold.

| | | |
|--------------------------|--|----------------------------------|
| AWOS-AV 123.05 | KANSAS CITY CENTER 127.7 351.825 | UNICOM 123.05 (CTAF) 0 |
|--------------------------|--|----------------------------------|



| CATEGORY | A | B | C | D |
|-----------------|----------------------|-----------------------|-----------------------|-------------------------------|
| LPV DA | | 853-1 | 313 (400-1) | |
| LNAV/VNAV DA | | 847-1 | 307 (400-1) | |
| LNAV MDA | 940-1 | 400 (400-1) | 940-1 1/8 | 400 (400-1 1/8) |
| CIRCLING | 980-1 439 (500-1) | 1000-1 459 (500-1) | 1220-2 679 (700-2) | 1240-2 1/4 699 (700-2 1/4) |