

CLTCH THREE DEPARTURE (RNAV)

NE-3, 28 NOV 2024 to 26 DEC 2024

DEPARTURE ROUTE DESCRIPTION

▼ Climb on heading assigned by ATC, expect RADAR vectors to BUTRZ, then on track 239° to CLTCH, thence....

....on assigned transition, maintain altitude assigned by ATC, expect clearance to filed altitude within ten (10) minutes after departure.

FLASK TRANSITION (CLTCH3.FLASK)
MAULS TRANSITION (CLTCH3.MAULS)

POTOMAC DEP CON
118.95 257.2
ATIS
128.175
CLNC DEL
351.8
GND CON
121.9 351.8
DAVISON TOWER ★
124.275 (CTAF) 229.4

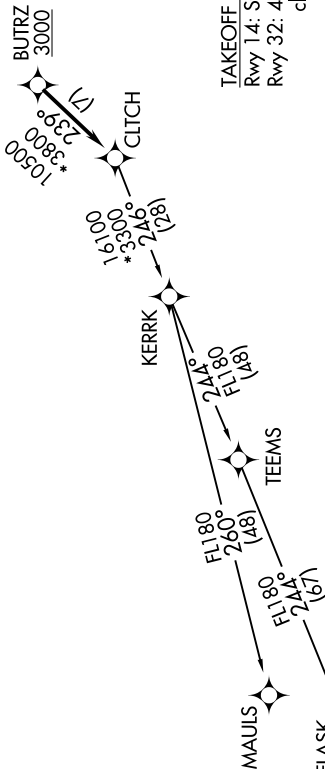
NOTE: RNAV 1.
NOTE: RADAR required.
NOTE: DME/DME/IRU or GPS required.
NOTE: Turbo-jets only.

TOP ALTITUDE:
3000

P-56B



P-56A



TAKEOFF MINIMUMS:

Rwy 14: Standard.
Rwy 32: 400-2 or Standard with minimum climb of 300' per NM to 500'.



NOTE: Chart not to scale.

CLTCH THREE DEPARTURE (RNAV)

(CLTCH3.CLTCH) 31DEC20

NE-3, 28 NOV 2024 to 26 DEC 2024