

FORT BELVOIR, VIRGINIA

# ILS or LOC RWY 32

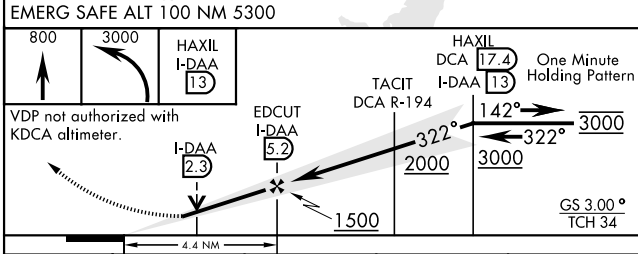
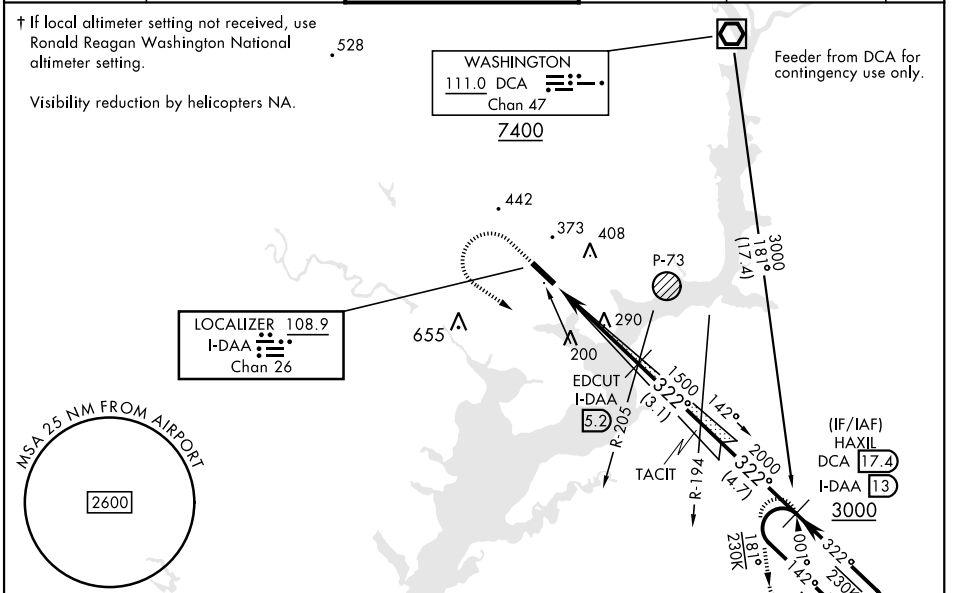
LOC/DME I-DAA <b>108.9</b> Chan <b>26</b>	APCH CRS <b>322°</b>	Rwy Ildg TDZE Arpt Elev <b>4529</b> <b>68</b> <b>74</b>
-------------------------------------------------	-------------------------	------------------------------------------------------------------------

[USA]

DAVISON AAF (KDAV)

RADAR required	MALSF 	MISSED APPROACH: Climb to 800, then climbing left turn to 3000 direct to HAXIL (DCA R-181/17.4 DME) and hold. Continue climb in hold to 3000.
<p>▼ * When ALS inop, increase RVR to 45, vis to 7/8 mile.          ** When ALS inop, increase CAT AB RVR to 55, vis to 1 mile, CAT CD vis to 1 1/8 miles.          *** When ALS inop, increase CAT AB RVR to 55, vis to 1 mile, CAT CD vis to 1 1/8 miles.</p>		

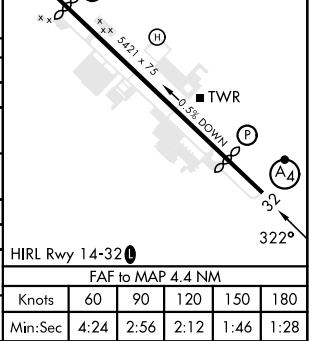
ATIS <b>128.175</b>	POTOMAC APP CON <b>118.95 319.1</b>	TOWER ★ <b>124.275</b> (CTAF) <b>0 229.4</b>	GND CON <b>121.9 351.8</b>	CLNC DEL <b>351.8</b>	PAR
------------------------	----------------------------------------	-------------------------------------------------	-------------------------------	--------------------------	-----



ELEV 74	TDZE 68
---------	---------

Rwy 14 Ildg 4930'  
Rwy 32 Ildg 4529'

CATEGORY	A	B	C	D
S-ILS 32*	348/40 280		(300-3/4)	
S-LOC 32**	580/40	512 (600-3/4)	580-1 1/4	512 (600-1 1/4)
CIRCLING	680-1	720-1	760-2	1000-3
	606 (700-1)	646 (700-1)	686 (700-2)	926 (1000-3)
† RONALD REAGAN WASHINGTON NATIONAL ALTIMETER SETTING MINIMUMS				
S-ILS 32	388/40 320		(400-3/4)	
S-LOC 32***	620/40	552 (600-3/4)	620-1 1/8	552 (600-1 1/8)
CIRCLING	720-1	760-1	800-2	1040-3
	646 (700-1)	686 (700-1)	726 (800-2)	966 (1000-3)



FORT BELVOIR, VIRGINIA  
Orig 05SEP24

38°43'N-77°11'W

DAVISON AAF (KDAV)

# ILS or LOC RWY 32

NE-3, 28 NOV 2024 TO 26 DEC 2024

NE-3, 28 NOV 2024 TO 26 DEC 2024