

NDB RWY 32

DAVISON AAF (KDAV)

NDB DAA 223	APCH CRS 323°	Rwy ldg 4529 TDZE 68 Arprt Elev 74
-----------------------	-------------------------	---

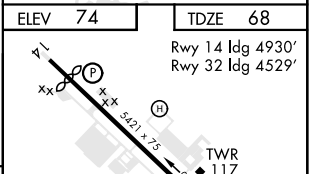
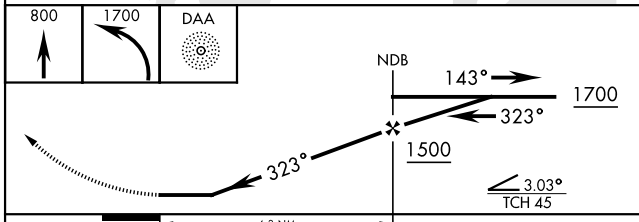
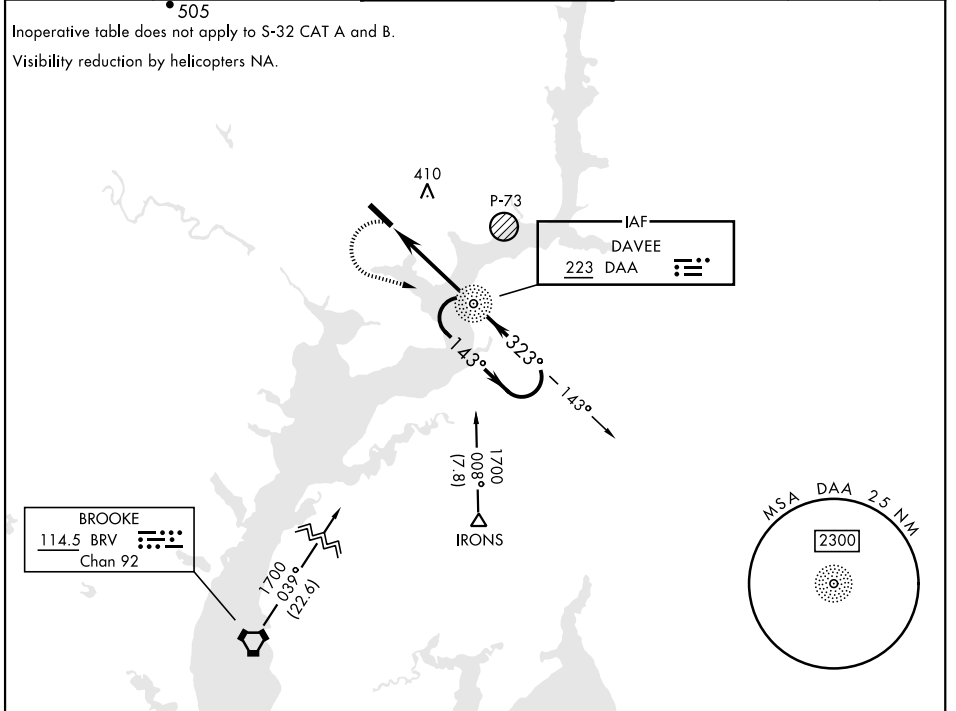
AL-5504 [USA]

▼ * When ALS inop, increase CAT D vis to 2 ¼ miles.
 ** If local altimeter setting not received, use Ronald Reagan Washington National altimeter setting.

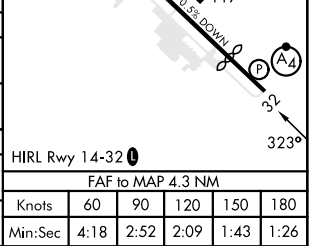
MALSF

MISSED APPROACH: Climb to 800 then climbing left turn to 1700 direct DAA NDB and hold.

ATIS 128.175	POTOMAC APP CON 118.95 319.1	TOWER* 124.275 (CTAF) 0 229.4	GND CON 121.9 351.8	CLNC DEL 351.8	PAR
------------------------	--	---	-------------------------------	--------------------------	-----



CATEGORY	A	B	C	D
S-32 *	740/50	672 (700-1)	740-1 ¾ 672 (700-1 ¾)	740-2 672 (700-2)
CIRCLING	740-1	666 (700-1)	740-1 ¾ 666 (700-1 ¾)	760-2 ¼ 686 (700-2 ¼)
** RONALD REAGAN WASHINGTON NATIONAL ALTIMETER SETTING MINIMUMS				
S-32 *	780/50	712 (800-1)	780-1 ¾ 712 (800-1 ¾)	780-2 712 (800-2)
CIRCLING	780-1	706 (800-1)	780-1 ¾ 706 (800-1 ¾)	800-2 ¼ 726 (800-2 ¼)



NDB RWY 32

NE-3, 28 NOV 2024 to 26 DEC 2024

NE-3, 28 NOV 2024 to 26 DEC 2024