

FORT BELVOIR, VIRGINIA

# RNAV (GPS) RWY 14

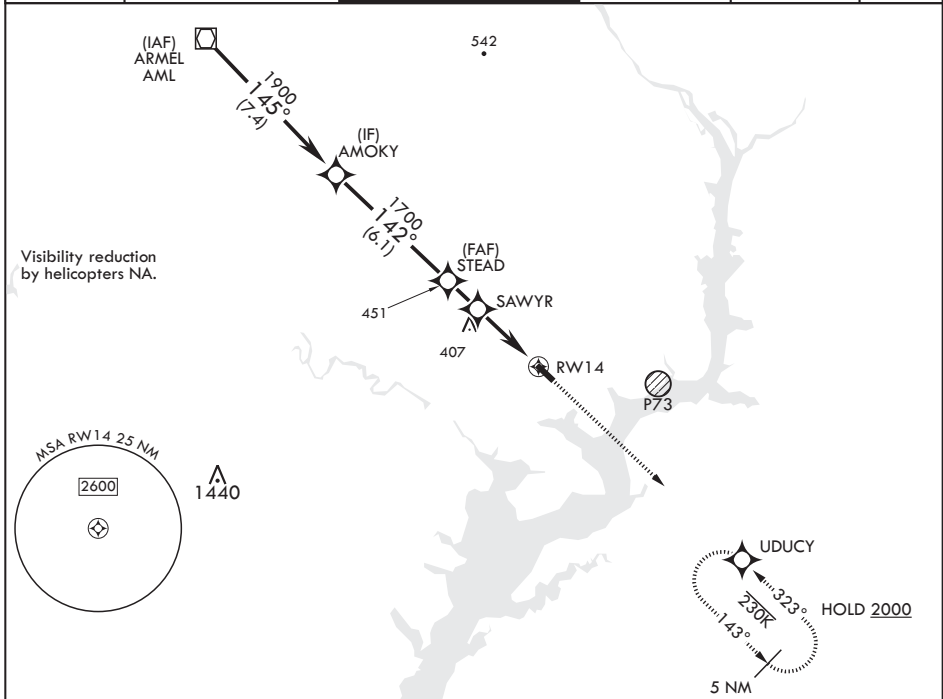
APCH CRS	Rwy Idg	4930
142°	TDZE	60
	Arprt Elev	74

-(USA)

DAVISON AAF (KDAV)

RNP APCH - GPS MISSED APPROACH: Climb to 2000 direct UDCY and hold.  
 \* If local altimeter setting not received, use Ronald Reagan Washington National altimeter setting.

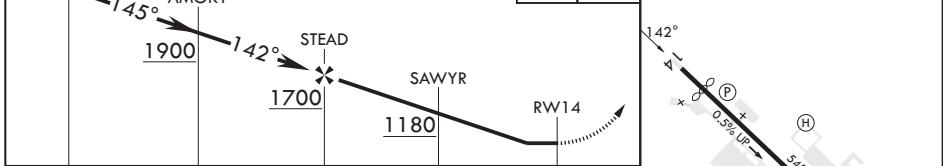
ATIS 128.175	POTOMAC APP CON 118.95 319.1	TOWER * 124.275 (CTAF) 0 229.4	GND CON 121.9 351.8	CLNC DEL 351.8	PAR
-----------------	---------------------------------	-----------------------------------	------------------------	-------------------	-----



Visual Segments - Obstacles

VOR/DME	2000 UDCY	ELEV 74	TDZE 60
---------	-----------	---------	---------

Rwy 14 Idg 4930'  
Rwy 32 Idg 4529'



CATEGORY	A	B	C	D
LNAV MDA	660-1	600 (600-1)	660-1¼ 600 (600-1¼)	660-2 600 (600-2)
CIRCLING	740-1	666 (700-1)	740-1¼ 666 (700-1¼)	760-2¼ 686 (700-2¼)
*RONALD REAGAN WASHINGTON NATIONAL ALTIMETER SETTING MINIMUMS				
LNAV MDA	700-1	640 (700-1)	700-2	640 (700-2)
CIRCLING	780-1	706 (800-1)	780-2 706 (800-2)	800-2¼ 726 (800-2¼)

HIRL all Rws 0

FORT BELVOIR, VIRGINIA  
Amdt 3 30NOV23

38°43'N - 77°11'W

DAVISON AAF (KDAV)

# RNAV (GPS) RWY 14

NE-3, 28 NOV 2024 to 26 DEC 2024

NE-3, 28 NOV 2024 to 26 DEC 2024