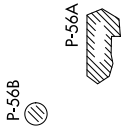


SCRAM SIX DEPARTURE (RNAV)

NE-3, 28 NOV 2024 to 26 DEC 2024

TOP ALTITUDE:
3000



DEPARTURE ROUTE DESCRIPTION

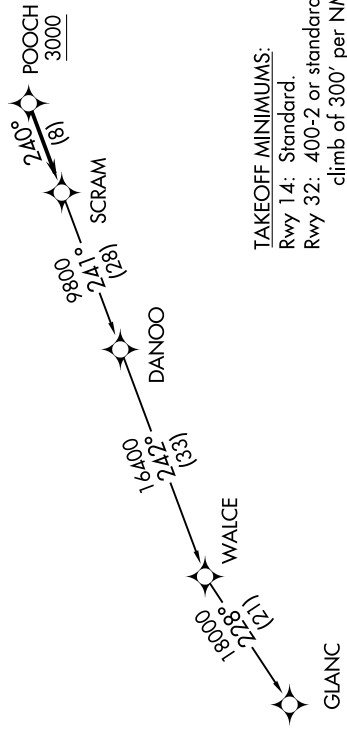
Climb on heading assigned by ATC, expect RADAR vectors to POOCH, then on track 240° to SCRAM, thence....

...as depicted. Maintain 3000, expect clearance to filed altitude within ten (10) minutes after departure.

GLANC TRANSITION (SCRAM6.GLANC):

ATIS 128.175
CINC DEL 351.8
GND CON 121.9 351.8
DAVISON TOWER ★ 124.275 (CTAF) 229.4
POTOMAC DEP CON 118.95 257.2

NOTE: RNAV 1.
NOTE: RADAR required.
NOTE: DME/DME/IRU or GPS required.
NOTE: Turbo-jets only.



TAKEOFF MINIMUMS:
Rwy 14: Standard.
Rwy 32: 400-2 or standard with minimum climb of 300' per NM to 500.

NOTE: Chart not to scale.

NE-3, 28 NOV 2024 to 26 DEC 2024