

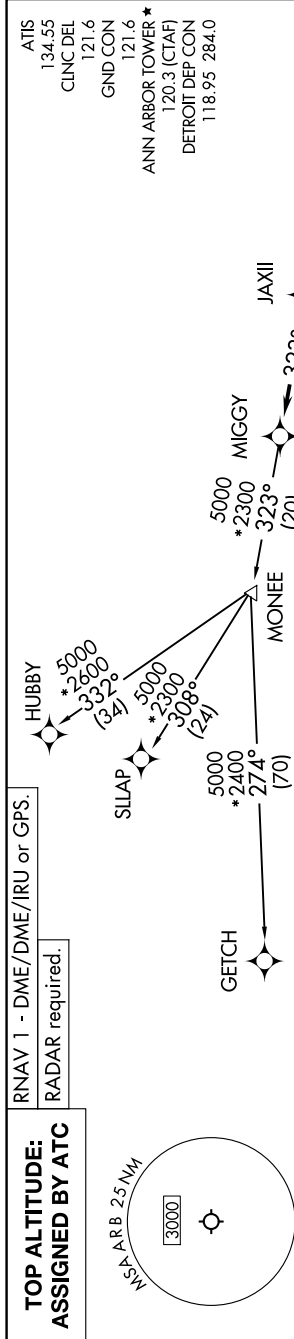
(MIGGY3.MIGGY) 24137

# MIGGY THREE DEPARTURE (RNAV) AL-5506 (FAA)

ANN ARBOR MUNI (ARB)

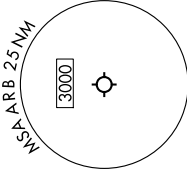
ANN ARBOR, MICHIGAN

EC-1, 28 NOV 2024 to 26 DEC 2024



RNAV 1 - DME/DME/IRU or GPS.  
 RADAR required.

**TOP ALTITUDE:  
 ASSIGNED BY ATC**



**TAKEOFF MINIMUMS:**  
 Rwy 12, 30: NA - Environmental.  
 Rwy 6, 24: Standard.

**NOTE:** Jet departures at/above 10000, maintain 280K until advised by ATC.  
**NOTE:** GETCH TRANSITION: For use by KMKE area arrivals only, or as assigned by ATC.

**DEPARTURE ROUTE DESCRIPTION**

**TAKEOFF RUNWAY 6:** Climb on heading 060° or as assigned by ATC, thence....  
**TAKEOFF RUNWAY 24:** Climb on heading 240° or as assigned by ATC, thence....  
 ....for RADAR vectors to JAXII, then on track 323° to MIGGY, then on (transition).  
 Maintain 17000 or as assigned by ATC, expect filed altitude 10 minutes after departure.

**GETCH TRANSITION (MIGGY3.GETCH):**  
**HUBBY TRANSITION (MIGGY3.HUBBY):**  
**SLLAP TRANSITION (MIGGY3.SLLAP):**



NOTE: Chart not to scale.

# MIGGY THREE DEPARTURE (RNAV) (MIGGY3.MIGGY) 16MAY24

ANN ARBOR, MICHIGAN  
ANN ARBOR MUNI (ARB)

EC-1, 28 NOV 2024 to 26 DEC 2024