

APP CRS 131°	Rwy Idg 3863
	TDZE 1178
	Apt Elev 1178

RNAV (GPS) RWY 13

CRYSTAL LAKE (5M5)

RNP APCH - GPS.

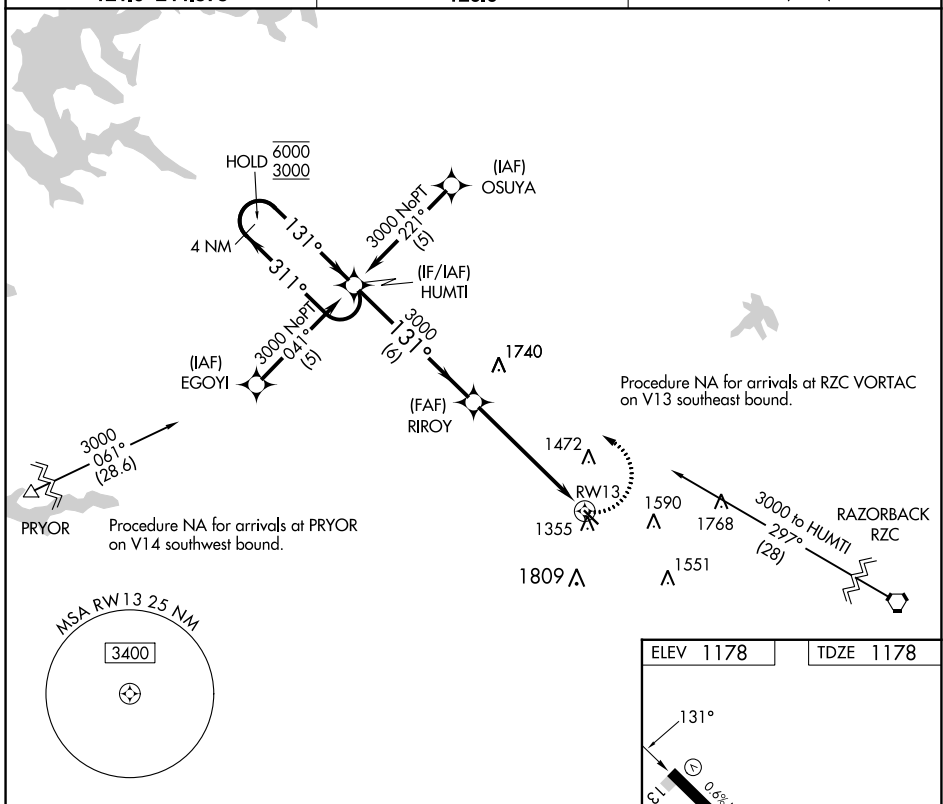
NA Procedure NA at night. Rwy 13 helicopter visibility reduction below 1 SM NA. Use Northwest Arkansas Nil altimeter setting; if not received, use Joplin Rgnl altimeter setting and increase all MDAs 120 feet and LNAV Cat C and Circling Cat B visibility ¼ SM and Circling Cat C visibility ½ SM. Circling NA for Cat C southwest of Rwy 13-31.

MISSED APPROACH:
Climbing left turn to 3000 direct HUMTI and hold.

RAZORBACK APP CON *
121.0 244.575

CLNC DEL
126.6

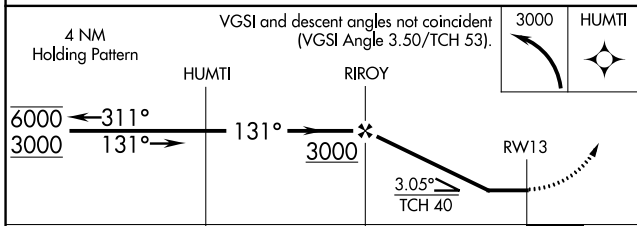
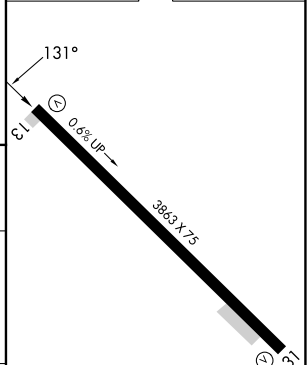
UNICOM
122.8 (CTAF)



SC-1, 28 NOV 2024 to 26 DEC 2024

SC-1, 28 NOV 2024 to 26 DEC 2024

ELEV 1178	TDZE 1178
-----------	-----------



CATEGORY	A	B	C	D
LNAV MDA	1720-1	542 (600-1)	1720-1 5/8 542 (600-1 5/8)	NA
C CIRCLING	1820-1 642 (700-1)	1900-1 722 (800-1)	1940-2 1/4 762 (800-2 1/4)	NA

LURL Rwy 13-31