

(ROCKY1.ROCKY) 23334
ROCKY ONE DEPARTURE

AL-5514 (FAA)

SHELBYVILLE MUNI (G/EZ)
 SHELBYVILLE, INDIANA

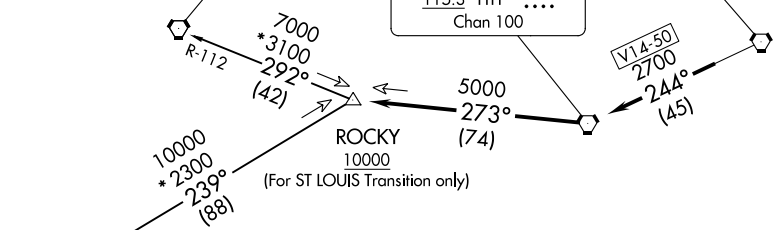
ASOS
 121.55
 INDIANAPOLIS DEP CON
 127.15 317.8

**TOP ALTITUDE:
 ASSIGNED BY ATC**

SPINNER
112.7 SPI \dashv \dashv \dashv \dashv \dashv \dashv
 Chan 74

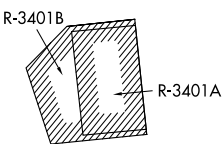
BRICKYARD
116.3 VHP \dashv \dashv \dashv \dashv \dashv \dashv
 Chan 110

TERRE HAUTE
115.3 TTH \dashv \dashv \dashv \dashv \dashv \dashv
 Chan 100



TAKEOFF MINIMUMS
 Rwys 1, 19: Standard.
 Rwys 9, 27: NA - Environmental.

ST LOUIS
117.4 STL \dashv \dashv \dashv \dashv \dashv \dashv
 Chan 121



- NOTE: RADAR required.
- NOTE: Select appropriate localizer/DME frequency/channel prior to departure.
- NOTE: Turbojets accelerate to 250K until reaching 10000, if unable advise ATC.
- NOTE: Assigned to aircraft with a requested altitude of 11000 or above.

NOTE: Chart not to scale.

DEPARTURE ROUTE DESCRIPTION

DEPARTING ALL OTHER AUTHORIZED RUNWAYS: Climb on assigned heading to assigned altitude. Thence . . .

. . . expect RADAR vectors to join VHP R-244 to TTH VORTAC, then via TTH R-273 to ROCKY INT then via transition or assigned route. Expect clearance to requested altitude ten minutes after departure.

SPINNER TRANSITION (ROCKY1.SPI): From over ROCKY INT on SPI R-112 to SPI VORTAC.
ST LOUIS TRANSITION (ROCKY1.STL): From over ROCKY INT on STL R-059 to STL VORTAC.

ROCKY ONE DEPARTURE
(ROCKY1.ROCKY) 01FEB18

SHELBYVILLE, INDIANA
 SHELBYVILLE MUNI (G/EZ)

EC-2, 28 NOV 2024 to 26 DEC 2024

EC-2, 28 NOV 2024 to 26 DEC 2024