

LOC/DME I-PGV 110.7 Chan 44	APP CRS 197°	Rwy Idg 6505 TDZE 25 Apt Elev 26
---	------------------------	---

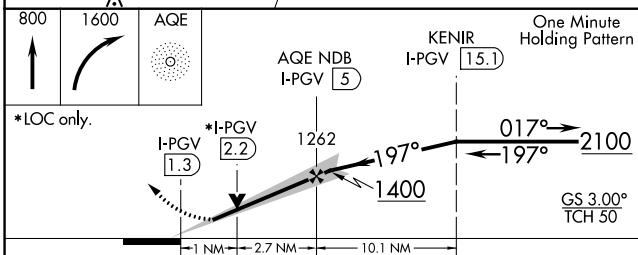
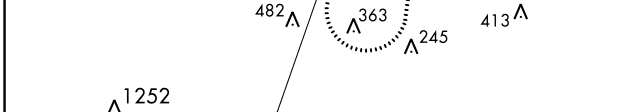
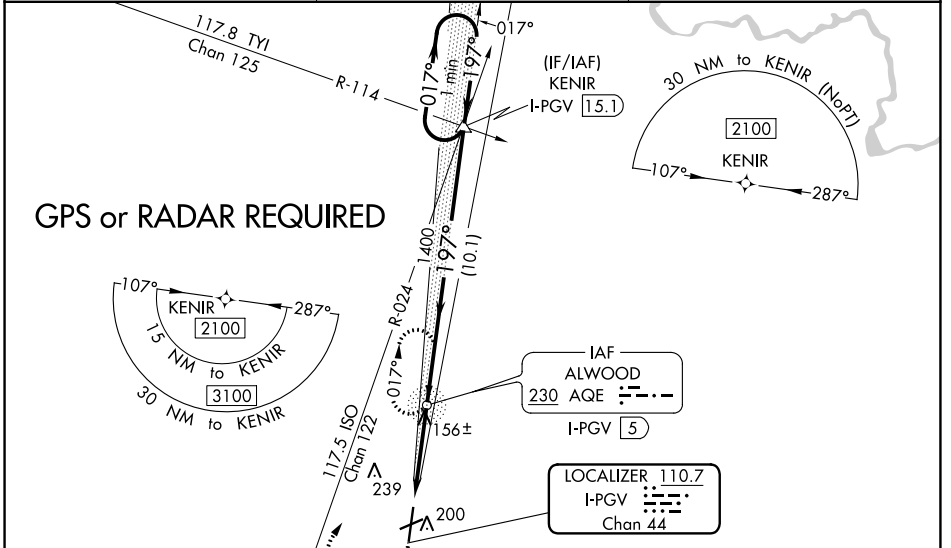
ILS Y or LOC Y RWY 20

PITT-GREENVILLE (PGV)

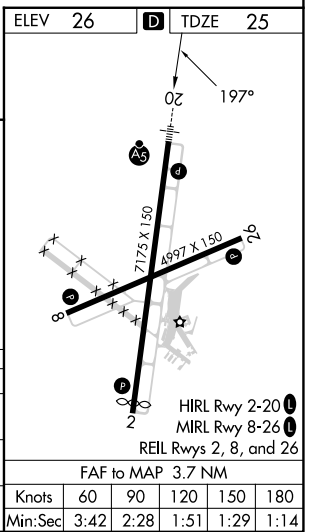
ADF required. VDP NA with Washington altimeter setting. When local altimeter setting not received use Washington altimeter setting and increase S-ILS 20 DA to 298 feet; increase all MDAs 60 feet and S-LOC 20 visibility Cat C/D $\frac{1}{2}$ SM, and Circling visibility Cat D $\frac{1}{4}$ SM. For inop ALS when using Washington altimeter setting, increase S-ILS 20 all Cats visibility $\frac{3}{8}$ SM, and S-LOC 20 visibility Cat A/B $\frac{1}{4}$ SM. Inop table does not apply to S-ILS all Cats. Rwy 20 helicopter visibility reduction below $\frac{3}{4}$ SM NA. For inop ALS, increase S-LOC 20 visibility Cat A/B $\frac{1}{4}$ SM, Cat C/D $\frac{3}{8}$ SM.

MALSR MISSED APPROACH: Climb to 800 then climbing right turn to 1600 direct AQE NDB and hold.

AWOS-3 128.425	WASHINGTON CENTER 123.85 279.65	UNICOM 122.8 (CTAF)
--------------------------	---	-------------------------------



CATEGORY	A	B	C	D
S-ILS 20		257- $\frac{3}{4}$	231 (300- $\frac{3}{4}$)	
S-LOC 20		420- $\frac{3}{4}$	394 (400- $\frac{3}{4}$)	
CIRCLING	600-1 574 (600-1)	620-1 594 (600-1)	700-2 674 (700-2)	800-2 $\frac{1}{2}$ 774 (800-2 $\frac{1}{2}$)



SE-2, 28 NOV 2024 to 26 DEC 2024

SE-2, 28 NOV 2024 to 26 DEC 2024