

APP CRS	Rwy Idg	<b>4997</b>
<b>076°</b>	TDZE	<b>24</b>
	Apt Elev	<b>26</b>

# RNAV (GPS) RWY 8

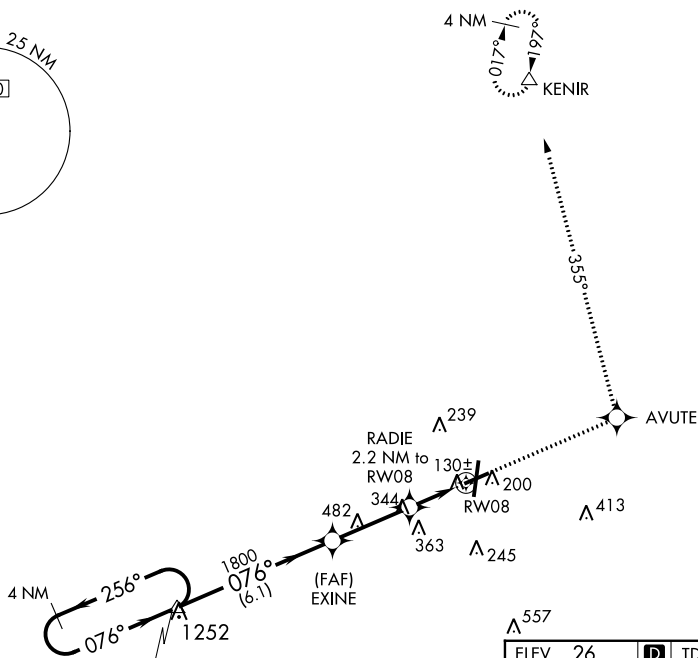
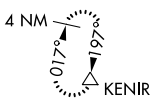
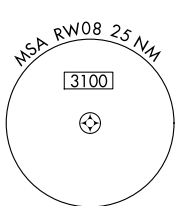
PITT-GREENVILLE (PGV)

RNP APCH - GPS.

**⚠** Rwy 8 helicopter visibility reduction below  $\frac{3}{4}$  SM NA. When local altimeter setting not received use Washington altimeter setting and increase all MDAs 60 feet, LNAV visibility Cat C and D  $\frac{1}{2}$  SM and Circling visibility Cat D  $\frac{1}{4}$  SM.

**MISSED APPROACH:** Climb to 3000 direct AVUTE and via 355° track to KENIR and hold.

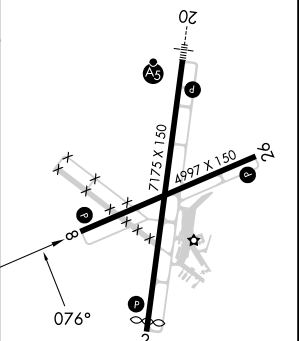
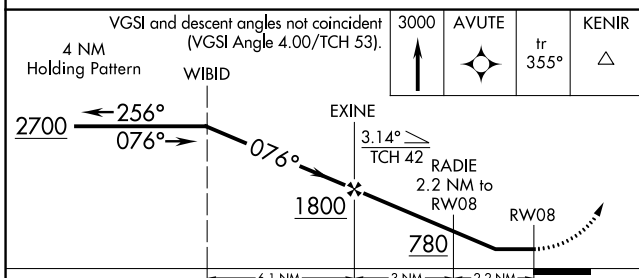
AWOS-3 <b>128.425</b>	WASHINGTON CENTER <b>123.85 279.65</b>	UNICOM <b>122.8 (CTAF) 0</b>
--------------------------	---	---------------------------------



NoPT for arrivals on V157 southbound.

(IF/IAF) WIBID

ELEV	26	<b>D</b>	TDZE	24
------	----	----------	------	----



CATEGORY	A	B	C	D
LNAV MDA	500-1	476 (500-1)	500-1 $\frac{3}{8}$	476 (500-1 $\frac{3}{8}$ )
CIRCLING	600-1 574 (600-1)	620-1 594 (600-1)	700-2 674 (700-2)	800-2 $\frac{1}{2}$ 774 (800-2 $\frac{1}{2}$ )

HIRL Rwy 2-20 **0**  
MIRL Rwy 8-26 **0**  
REIL Rws 2, 8, and 26

SE-2, 28 NOV 2024 to 26 DEC 2024

SE-2, 28 NOV 2024 to 26 DEC 2024