

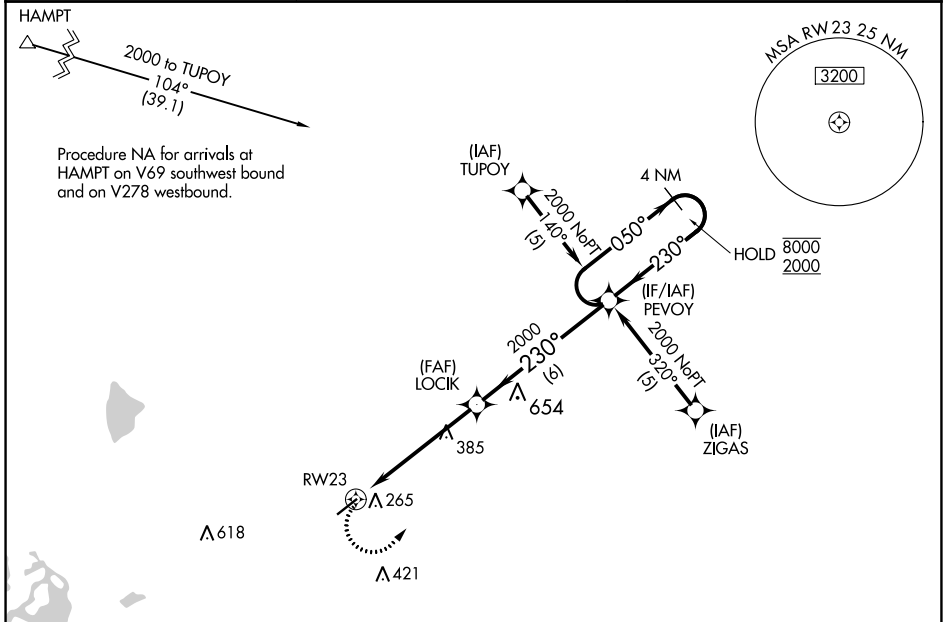
|                        |                        |
|------------------------|------------------------|
| APP CRS<br><b>230°</b> | Rwy Idg<br><b>5010</b> |
|                        | TDZE<br><b>184</b>     |
|                        | Apt Elev<br><b>184</b> |

# RNAV (GPS) RWY 23

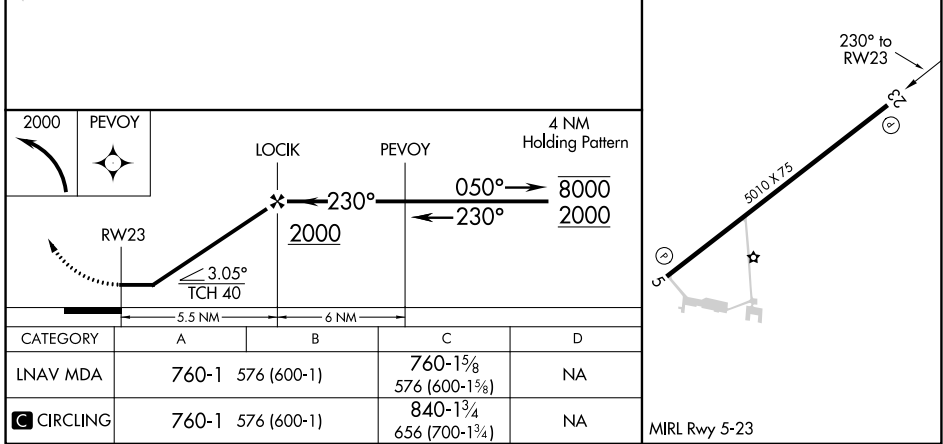
Z M JACK STELL FLD (CRT)

|                    |   |  |
|--------------------|---|--|
| RNP APCH - GPS.    | <p><b>▼</b> Rwy 23 helicopter visibility reduction below 1 SM NA. Straight-in and Circling Rwy 23 NA at night. Use Monroe LA. altimeter setting; when not received, use El Dorado altimeter setting and increase all MDA 20 feet, increase LNAV Cat C visibility 1/2 SM and Circling Cat C visibility 1/4 SM.</p> | <p><b>MISSED APPROACH:</b><br/>Climbing left turn to 2000 direct PEVOY and hold.</p> |
| <p><b>▲ NA</b></p> |   |  |

|                           |   |                               |
|---------------------------|---|-------------------------------|
| MLU ASOS<br><b>125.05</b> | MEMPHIS CENTER<br><b>135.875 269.35</b> | UNICOM<br><b>122.8 (CTAF)</b> |
|---------------------------|---|-------------------------------|



|          |          |
|----------|----------|
| ELEV 184 | TDZE 184 |
|----------|----------|



SC-1, 28 NOV 2024 to 26 DEC 2024

SC-1, 28 NOV 2024 to 26 DEC 2024