

VORTAC RBV <b>113.8</b> Chan 85	APP CRS <b>232°</b>	Rwy Idg TDZE Apt Elev	<b>N/A</b> <b>N/A</b> <b>49</b>
---------------------------------------	------------------------	-----------------------------	---------------------------------------

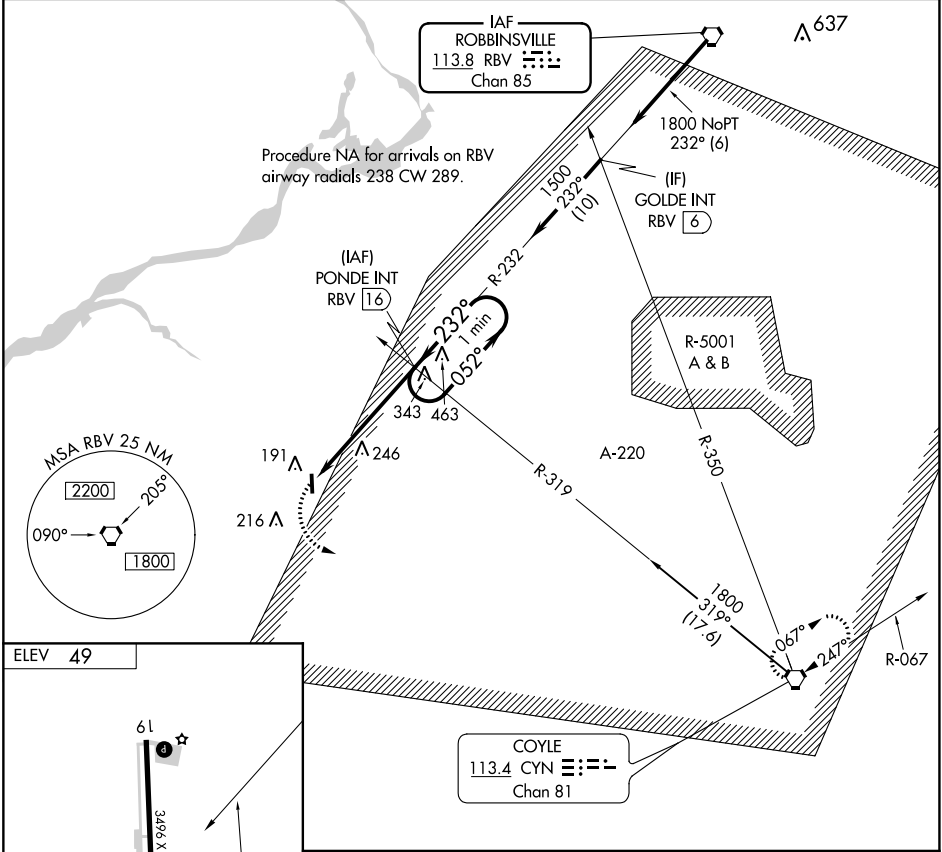
# VOR-A

FLYING W (N14)

**NA** Helicopter visibility reduction below 1 SM NA. Use Mount Holly altimeter setting, when not received use Northeast Philadelphia altimeter setting and increase all MDA 40 feet. Night Landing: Rwy 1 NA.

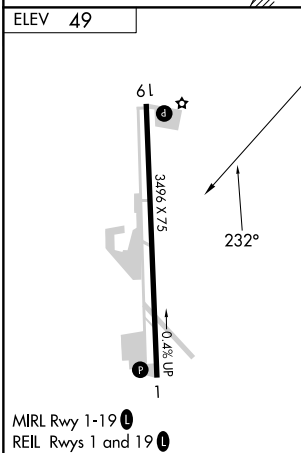
MISSED APPROACH: Climbing left turn to 2000 direct CYN VORTAC and hold.

VAY ASOS <b>119.325</b>	MC GUIRE APP CON <b>126.475 363.8</b>	UNICOM <b>122.8</b> (CTAF) <b>0</b>
----------------------------	--	--

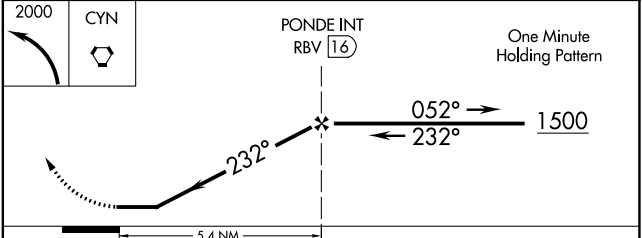


NE-2, 28 NOV 2024 to 26 DEC 2024

NE-2, 28 NOV 2024 to 26 DEC 2024



MIRL Rwy 1-19 **0**  
REIL Rwys 1 and 19 **0**



FAF to MAP 5.4 NM					
Knots	60	90	120	150	180
Min:Sec	5:24	3:36	2:42	2:10	1:48
CATEGORY	A	B	C	D	
CIRCLING	600-1 551 (600-1)	600-1½ 551 (600-1½)	NA		