

WAAS CH 62822 W16A	APP CRS 161°	Rwy Idg 4901 TDZE 1296 Apt Elev 1300
--	------------------------	---

RNAV (GPS) RWY 16

CRESTON MUNI (CSQ)

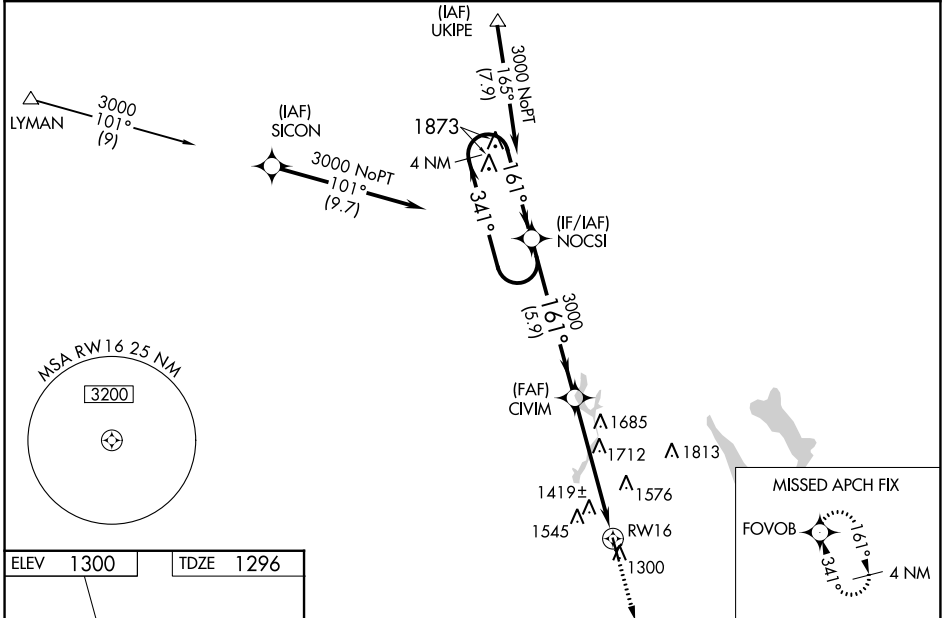
⚠ Baro-VNAV NA when using Des Moines altimeter setting. For uncompensated Baro-VNAV systems, LNAV/VNAV NA below -17°C (2°F) or above 54°C (130°F). DME/DME RNP-0.3 NA. Helicopter visibility reduction below 3/4 SM NA. Circling NA to Rwy 4-22. Circling NA for Cats B and C west of Rwy 16-34. When local altimeter setting not received, use Des Moines altimeter setting and increase all DA 150 feet and all MDA 160 feet; increase LPV all Cats visibility 3/8 mile, LNAV/VNAV all Cats visibility 1/2 mile, LNAV and Circling Cat A/B visibility 1/4 mile, and LNAV and Circling Cat C visibility 1/2 mile.

MISSED APPROACH:
Climb to 3000 direct
FOVOB and hold.

AWOS-3
124.75

MINNEAPOLIS CENTER
125.65 306.95

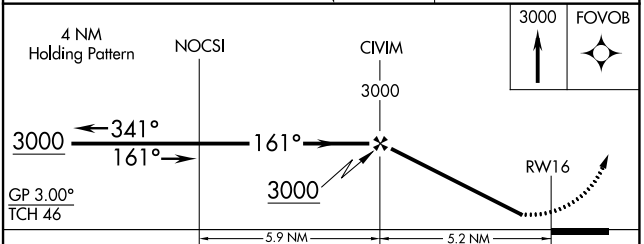
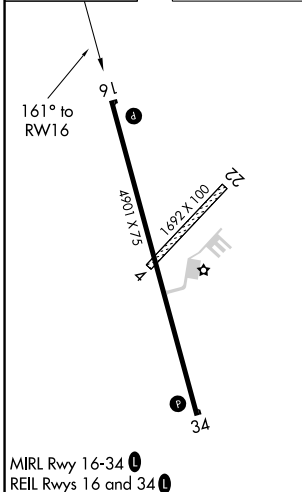
UNICOM
122.8 (CTAF) 0



NC-3, 28 NOV 2024 to 26 DEC 2024

NC-3, 28 NOV 2024 to 26 DEC 2024

ELEV	1300	TDZE	1296
------	------	------	------



CATEGORY	A	B	C	D
LPV DA	1546-1	250 (300-1)		NA
LNAV/VNAV DA	1730-1½	434 (500-1½)		NA
LNAV MDA	2020-1	724 (800-1)	2020-2 724 (800-2)	NA
CIRCLING	2020-1	720 (800-1)	2020-2 720 (800-2)	NA