

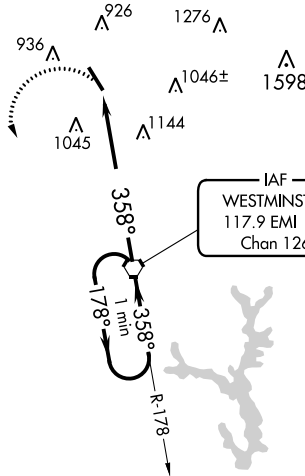
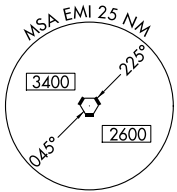
VORTAC EMI 117.9 Chan 126	APP CRS 358°	Rwy Idg TDZE Apt Elev	5100 788 789
---	------------------------	-----------------------------	---

VOR RWY 34

CARROLL COUNTY RGNL/JACK B POAGE FLD (DMW)

<p>▼</p> <p>▲ NA</p>	<p>MISSED APPROACH: Climbing left turn to 2900 direct EMI VORTAC and hold.</p>		
----------------------	--	--	--

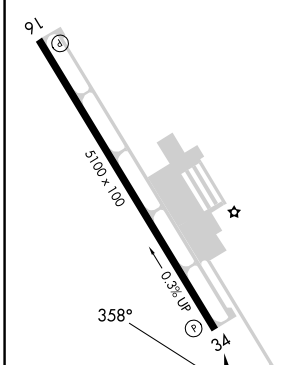
<p>AWOS-3 121.25</p>	<p>POTOMAC APP CON 125.525 291.625</p>	<p>GCO 121.725</p>	<p>UNICOM 122.7 (CTAF) 0</p>
---------------------------------	---	-------------------------------	---



NE-3, 28 NOV 2024 to 26 DEC 2024

NE-3, 28 NOV 2024 to 26 DEC 2024

ELEV 789	TDZE 788
-----------------	-----------------

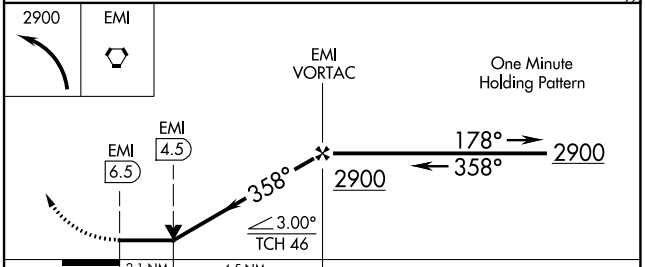


REIL Rwy 16 and 34
MIRL Rwy 16-34

FAF to MAP 6.5 NM

Knots	60	90	120	150	180
Min:Sec	6:30	4:20	3:15	2:36	2:10

WASHINGTON DC METROPOLITAN SFRA
**WARNING -- WASHINGTON DC SFRA.
 CTC POTOMAC APP CON**



CATEGORY	A	B	C	D
S-34	1480-1	692 (700-1)	1480-2 692 (700-2)	NA
CIRCLING	1480-1	691 (700-1)	1500-2 711 (800-2)	NA

VOR RWY 34