

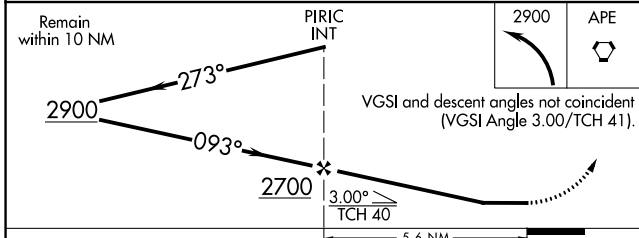
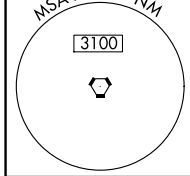
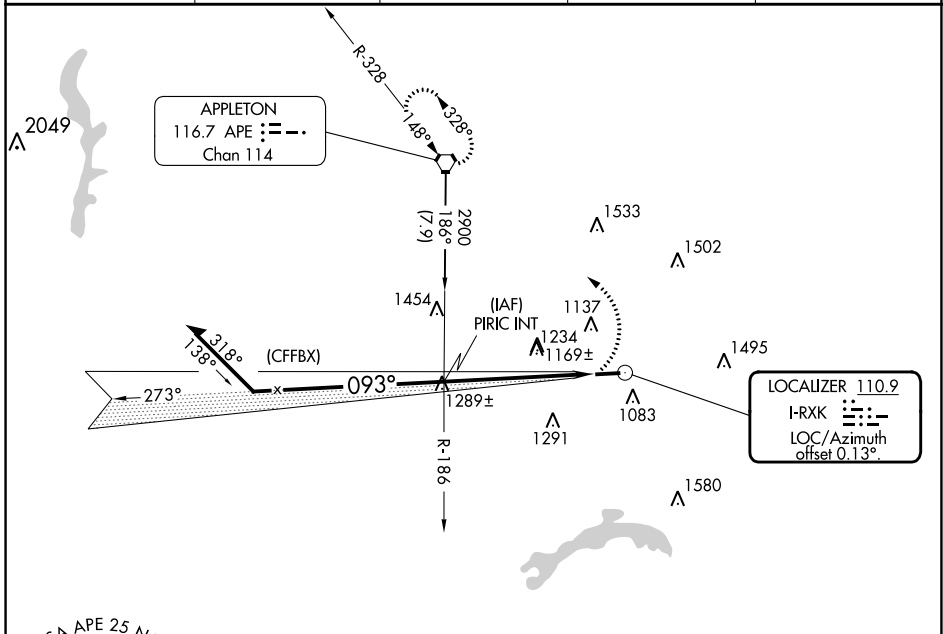
LOC I-RXK <b>110.9</b>	APP CRS <b>093°</b>	Rwy Idg <b>4192</b>
		TDZE <b>884</b>
		Apt Elev <b>884</b>

# LOC RWY 9

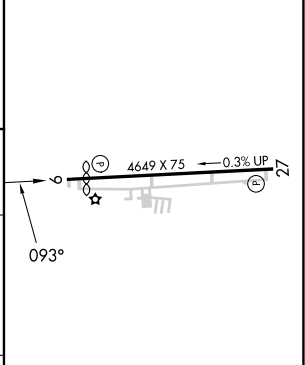
LICKING COUNTY RGNL (VTA)

**▼** Rwy 9 helicopter visibility reduction below 1 SM NA. Straight-in and Circling Rwy 9 NA at night.  
**▲ NA** MISSED APPROACH: Climbing left turn to 2900 direct APE VORTAC and hold.

ASOS <b>121.125</b>	COLUMBUS APP CON <b>125.95 317.775</b>	CLNC DEL <b>125.175</b>	UNICOM <b>122.7 (CTAF)</b>	<b>123.3 0</b>
------------------------	---	----------------------------	-------------------------------	----------------



ELEV 884	TDZE 884
----------	----------



CATEGORY	A	B	C	D
S-9	1420-1	536 (600-1)	1420-1½	536 (600-1½)
<b>C</b> CIRCLING	1480-1	596 (600-1)	1760-2½ 876 (900-2½)	1760-2¾ 876 (900-2¾)

MIRL Rwy 9-27 <b>0</b>					
REIL Rwys 9 and 27 <b>0</b>					
FAF to MAP 5.6 NM					
Knots	60	90	120	150	180
Min:Sec	5:36	3:44	2:48	2:14	1:52

EC-2, 28 NOV 2024 to 26 DEC 2024

EC-2, 28 NOV 2024 to 26 DEC 2024