

CRIED ONE DEPARTURE

AL-5537 (FAA)

SUGAR LAND RGNL (SGR)

HOUSTON, TEXAS

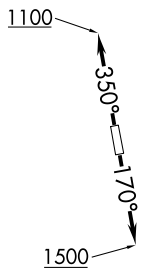
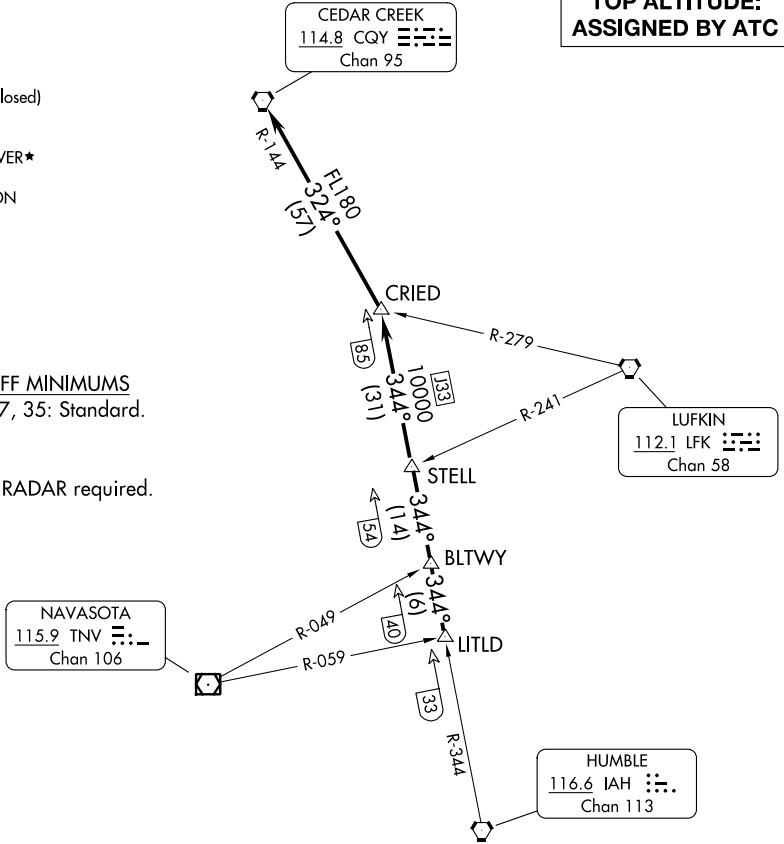
ATIS ★
 118.125
 CLNC DEL
 121.4
 CLNC DEL
 119.25 (when twr closed)
 GND CON
 121.4
 SUGAR LAND TOWER★
 118.65 (CTAF)
 HOUSTON DEP CON
 123.8 257.7

**TOP ALTITUDE:
 ASSIGNED BY ATC**

TAKEOFF MINIMUMS

Rwys 17, 35: Standard.

NOTE: RADAR required.



(CONTINUED ON FOLLOWING PAGE)

NOTE: Chart not to scale.

SC-5, 28 NOV 2024 to 26 DEC 2024

SC-5, 28 NOV 2024 to 26 DEC 2024

CRIED ONE DEPARTURE

HOUSTON, TEXAS

SUGAR LAND RGNL (SGR)

CRIED ONE DEPARTURE



DEPARTURE ROUTE DESCRIPTION

TAKEOFF RUNWAY 17: Climb on heading 170° to 1500 before turning. When entering controlled airspace, climb on assigned heading for RADAR vectors to LITLD INT. Maintain ATC assigned altitude. Expect filed altitude 10 minutes after departure, thence

TAKEOFF RUNWAY 35: Climb on heading 350° to 1100 before turning. When entering controlled airspace, climb on assigned heading for RADAR vectors to LITLD INT. Maintain ATC assigned altitude. Expect filed altitude 10 minutes after departure, thence

. . . . on IAH R-344 to STELL INT, then on IAH R-344 to CRIED INT, then left turn on CQY R-144 to CQY VORTAC.

SC-5, 28 NOV 2024 to 26 DEC 2024

SC-5, 28 NOV 2024 to 26 DEC 2024