

KARRR SEVEN DEPARTURE (RNAV)
(KARRR7 .KARRR) 29DEC22

HOUSTON, TEXAS
SUGAR LAND RGNL (SGR)

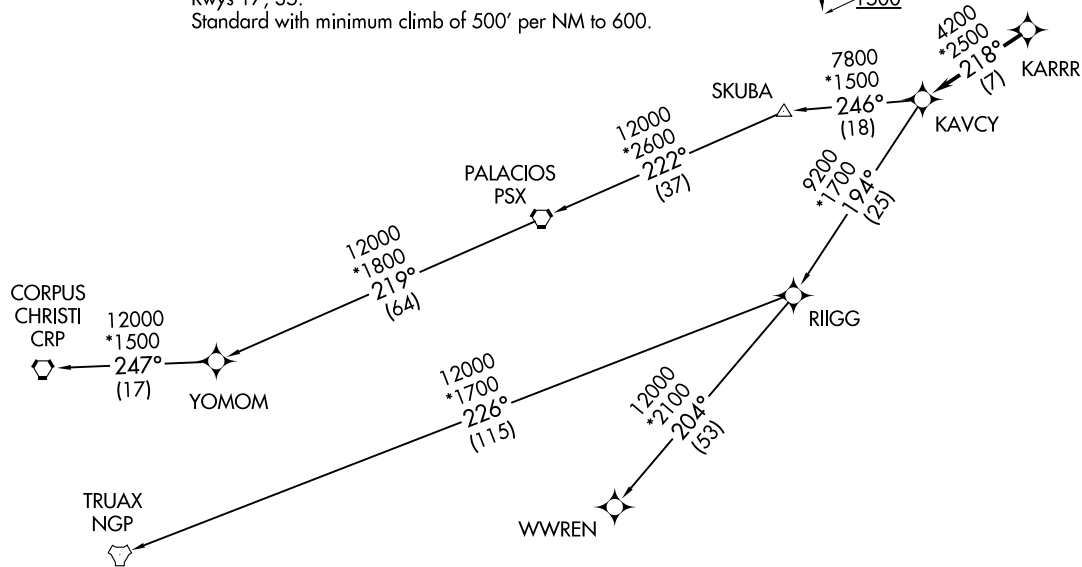
ATIS★
118.125
CLNC DEL
121.4
CLNC DEL (when twr closed)
119.25
GND CON
121.4
SUGARLAND TOWER★
118.65 (CTAF)
HOUSTON DEP CON
123.8 257.7

RNAV-1 DME/DME/IRU or GPS.
RADAR required.

TAKEOFF MINIMUMS

Rwys 17, 35:
Standard with minimum climb of 500' per NM to 600.

**TOP ALTITUDE:
ASSIGNED BY ATC**



(NARRATIVE ON FOLLOWING PAGE)

NOTE: Chart not to scale.

(KARRR7 .KARRR) 22363
SUGAR SEVEN DEPARTURE (RNAV)

AL-5537 (FAA)
SUGAR LAND RGNL (SGR)
HOUSTON, TEXAS

KARRR SEVEN DEPARTURE (RNAV)



DEPARTURE ROUTE DESCRIPTION

TAKEOFF RUNWAY 17: Climb on heading 170° to 1500, for RADAR vectors to KARRR, thence. . . .

TAKEOFF RUNWAY 35: Climb on heading 350° to 1100, for RADAR vectors to KARRR, thence. . . .

. . . .on track 218° to KAVCY, then on (transition). Maintain ATC assigned altitude. Expect filed altitude 10 minutes after departure.

CORPUS CHRISTI TRANSITION (KARRR7.CRP)

PALACIOS TRANSITION (KARRR7.PSX)

TRUAX TRANSITION (KARRR7.NGP)

WWREN TRANSITION (KARRR7.WWREN)

YOMOM TRANSITION (KARRR7.YOMOM)

SC-5, 28 NOV 2024 to 26 DEC 2024

SC-5, 28 NOV 2024 to 26 DEC 2024