

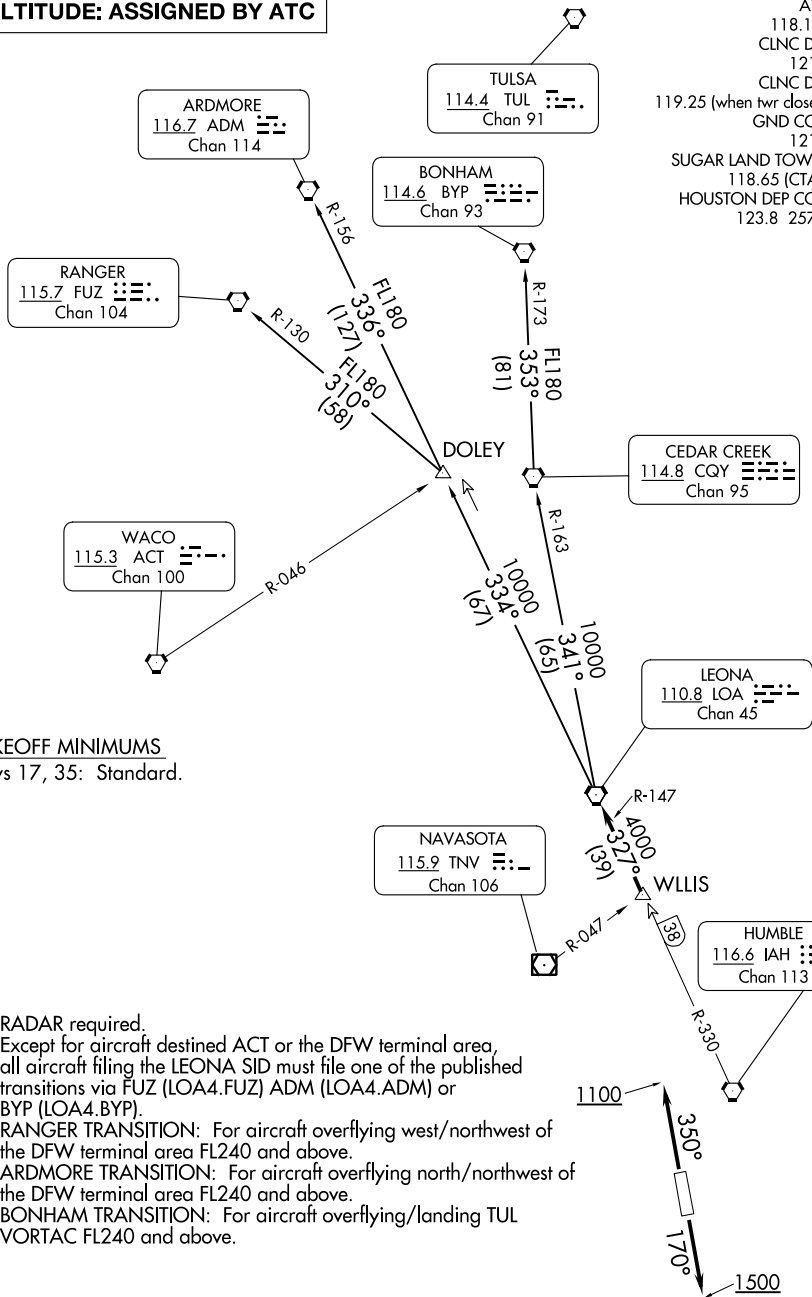
LEONA FOUR DEPARTURE

AL-5537 (FAA)

SUGAR LAND RGNL (SGR)
HOUSTON, TEXAS

TOP ALTITUDE: ASSIGNED BY ATC

- ATIS ★
- 118.125
- CLNC DEL
- 121.4
- CLNC DEL
- 119.25 (when twr closed)
- GND CON
- 121.4
- SUGAR LAND TOWER ★
- 118.65 (CTAF)
- HOUSTON DEP CON
- 123.8 257.7



TAKEOFF MINIMUMS
Rwys 17, 35: Standard.

- NOTE: RADAR required.
- NOTE: Except for aircraft destined ACT or the DFW terminal area, all aircraft filing the LEONA SID must file one of the published transitions via FUZ (LOA4.FUZ) ADM (LOA4.ADM) or BYP (LOA4.BYP).
- NOTE: RANGER TRANSITION: For aircraft overflying west/northwest of the DFW terminal area FL240 and above.
- NOTE: ARDMORE TRANSITION: For aircraft overflying north/northwest of the DFW terminal area FL240 and above.
- NOTE: BONHAM TRANSITION: For aircraft overflying/landing TUL VORTAC FL240 and above.

NOTE: Chart not to scale.

(CONTINUED ON FOLLOWING PAGE)

SC-5, 28 NOV 2024 to 26 DEC 2024

SC-5, 28 NOV 2024 to 26 DEC 2024



DEPARTURE ROUTE DESCRIPTION

TAKEOFF RUNWAY 17: Climb on heading 170° to 1500 before turning. When entering controlled airspace, climb on assigned heading for RADAR vectors to WLLIS INT. Maintain ATC assigned altitude. Expect filed altitude 10 minutes after departure, thence

TAKEOFF RUNWAY 35: Climb on heading 350° to 1100 before turning. When entering controlled airspace, climb on assigned heading for RADAR vectors to WLLIS INT. Maintain ATC assigned altitude. Expect filed altitude 10 minutes after departure, thence

. . . . on LOA R-147 to LOA VORTAC.

ARDMORE TRANSITION (LOA4.ADM): From over LOA VORTAC on LOA R-334 to DOLEY INT, then on ADM R-156 to ADM VORTAC.

BONHAM TRANSITION (LOA4.BYP): From over LOA VORTAC on LOA R-341 and CQY R-163 to CQY VORTAC, then on BYP R-173 to BYP VORTAC.

RANGER TRANSITION (LOA4.FUZ): From over LOA VORTAC on LOA R-334 to DOLEY INT, then on FUZ R-130 to FUZ VORTAC.

SC-5, 28 NOV 2024 to 26 DEC 2024

SC-5, 28 NOV 2024 to 26 DEC 2024