

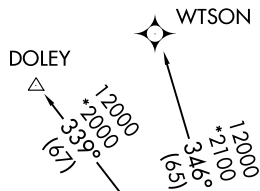
(STYCK8.STYCK) 21280

AL-5537 (FAA)

STYCK EIGHT DEPARTURE (RNAV)

SUGAR LAND RGNL (SGR)

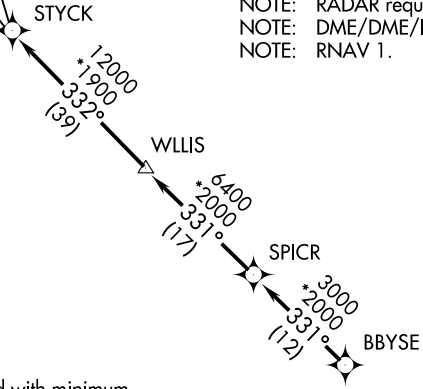
HOUSTON, TEXAS



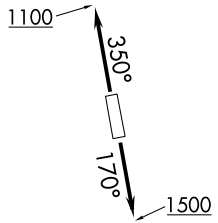
**TOP ALTITUDE:
ASSIGNED BY ATC**

- ATIS ★ 118.125
- CLNC DEL 121.4
- CLNC DEL 119.25 (when twr closed)
- GND CON 121.4
- SUGARLAND TOWER ★ 118.65 (CTAF)
- HOUSTON DEP CON 123.8 257.7

- NOTE: RADAR required.
- NOTE: DME/DME/IRU or GPS required.
- NOTE: RNAV 1.



TAKEOFF MINIMUMS
Rwys 17, 35: Standard with minimum climb of 500' per NM to 600.



NOTE: Chart not to scale.

DEPARTURE ROUTE DESCRIPTION

TAKEOFF RUNWAY 17: Climb on heading 170° to 1500 for RADAR vectors to BBYSE, thence. . .

TAKEOFF RUNWAY 35: Climb on heading 350° to 1100 for RADAR vectors to BBYSE, thence. . .

. . . on track 331° to SPICR, then on track 331° to WLLIS, then on track 332° to STYCK, then on (transition). Maintain ATC assigned altitude. Expect filed altitude 10 minutes after departure.

DOLEY TRANSITION (STYCK8.DOLEY)
WTSON TRANSITION (STYCK8.WTSON)

STYCK EIGHT DEPARTURE (RNAV)

(STYCK8.STYCK) 07OCT21

HOUSTON, TEXAS
SUGAR LAND RGNL (SGR)

SC-5, 28 NOV 2024 to 26 DEC 2024

SC-5, 28 NOV 2024 to 26 DEC 2024