

VOR/DME EWO <b>113.95</b> Chan <b>86 (Y)</b>	APP CRS <b>037°</b>	Rwy Idg <b>5003</b> TDZE <b>655</b> Apt Elev <b>669</b>
--	------------------------	---

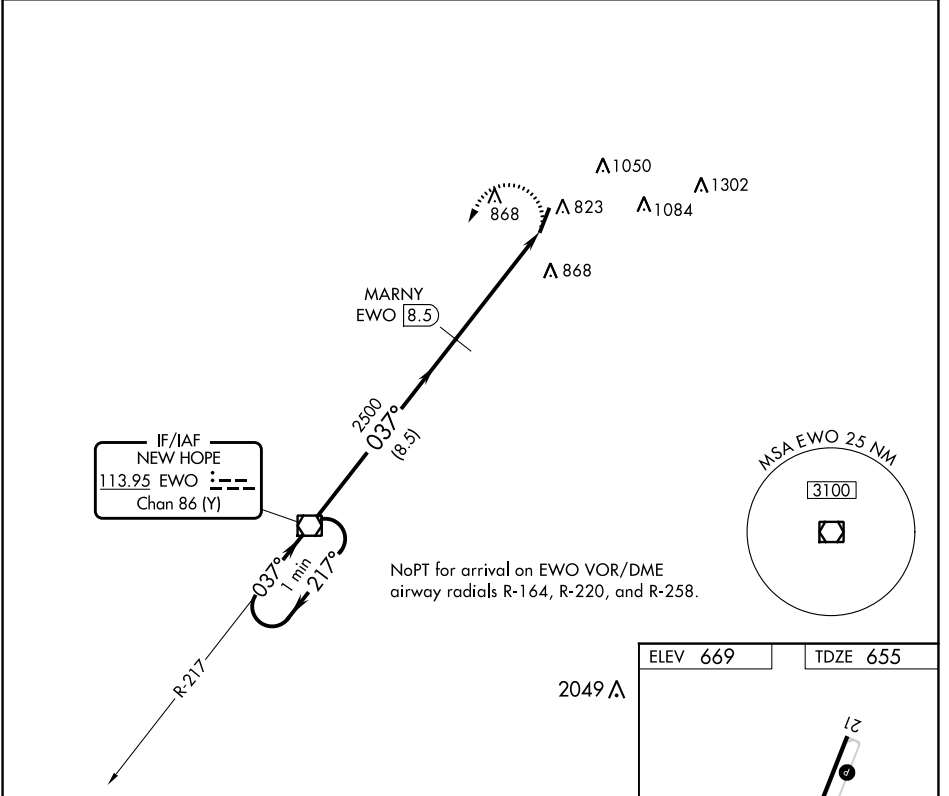
# VOR RWY 3

SAMUELS FLD (BRY)

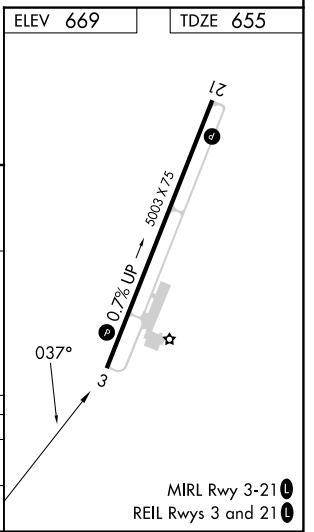
Straight-in and Circling minimums NA at night.  
 Rwy 3 helicopter visibility reduction below 1 SM NA.  
 DME required.

MISSED APPROACH: Climbing left turn to 2500 direct EWO VOR/DME and hold.

AWOS-3 <b>119.925</b>	LOUISVILLE APP CON <b>132.075 327.0</b>	UNICOM <b>122.8 (CTAF) 0</b>
--------------------------	--	---------------------------------



One Minute Holding Pattern	EWO VOR/DME		MARNY EWO 8.5	2500 EWO
	2500 ← 217°	037° → 2500	037° → 2500	3.50° TCH 41
8.5 NM		4.9 NM		
CATEGORY	A	B	C	D
S-3	1200-1	545 (600-1)	1200-1½	545 (600-1½)
CIRCLING	1200-1 531 (600-1)	1280-1 611 (700-1)	1360-2 691 (700-2)	1480-2¾ 811 (900-2¾)



SE-1, 28 NOV 2024 to 26 DEC 2024

SE-1, 28 NOV 2024 to 26 DEC 2024