

VOR/DME JBR <b>115.85</b> Chan <b>105(Y)</b>	APP CRS <b>019°</b>	Rwy Idg TDZE Apt Elev <b>4011</b> <b>290</b> <b>290</b>
--	------------------------	--

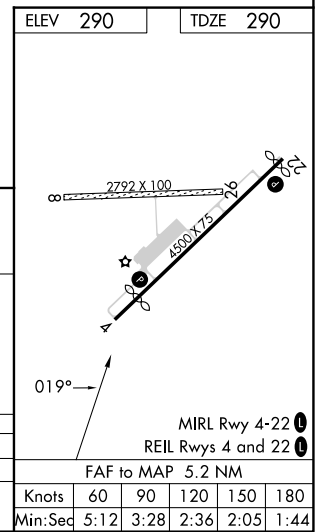
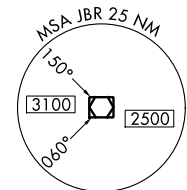
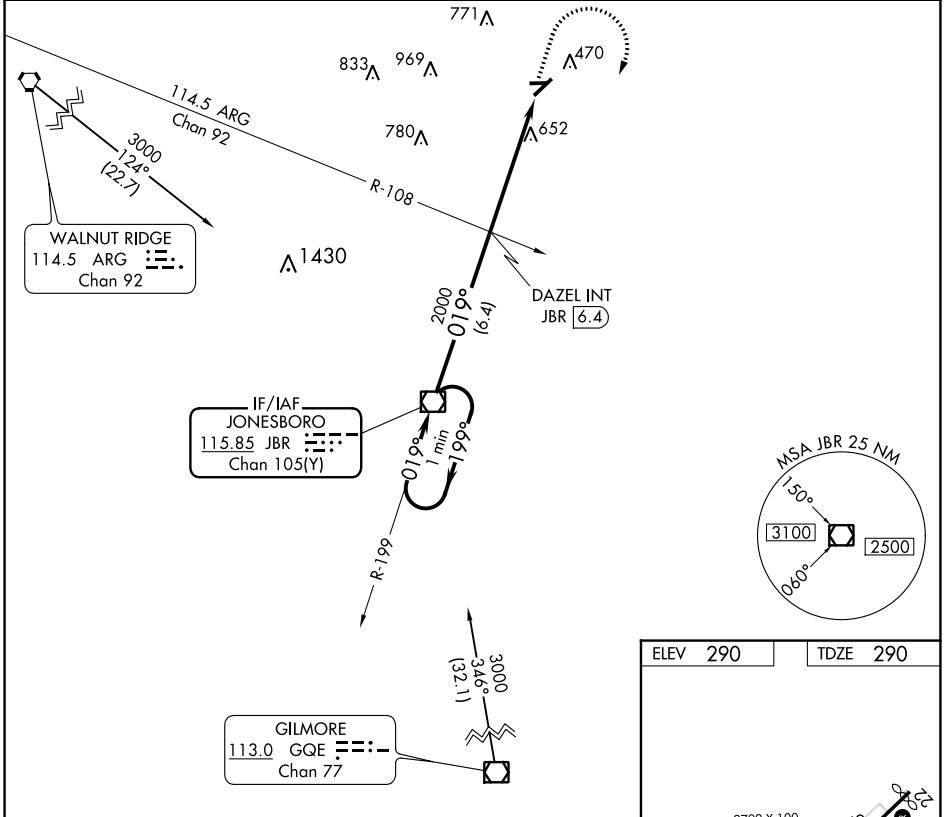
# VOR RWY 4

KIRK FLD (PGR)

**⚠** Helicopter visibility reduction below 1 SM NA. Procedure NA at night. Circling NA to Rwy's 8 and 26. Use Jonesboro altimeter setting; when not received, use Walnut Ridge altimeter setting and increase all MDAs 20 feet.

**⚠** MISSED APPROACH: Climb to 1500 then climbing right turn to 3000 direct JBR VOR/DME and hold.

JBR ASOS <b>118.525</b>	MEMPHIS CENTER <b>120.075 289.4</b>	UNICOM <b>122.8 (CTAF) 0</b>
----------------------------	--	---------------------------------



One Minute Holding Pattern	JBR VOR/DME		1500	3000	JBR	
	3000	019°	019°	019°	019°	
VGSIs and descent angles not coincident (VGSIs Angle 3.00/TCH 18).		6.4 NM	5.2 NM	3.00° TCH 40	JBR 11.7	
CATEGORY	A	B	C	D		
S-4	980-1	690 (700-1)	NA	NA	FAF to MAP 5.2 NM	
CIRCLING	980-1	1000-1	NA	NA		
	690 (700-1)	710 (800-1)				
	Knots	60	90	120	150	180
	Min:Sec	5:12	3:28	2:36	2:05	1:44

SC-1, 28 NOV 2024 to 26 DEC 2024

SC-1, 28 NOV 2024 to 26 DEC 2024