

WAAS CH 78321 W05A	APP CRS 053°	Rwy Idg 5717 TDZE 1313 Apt Elev 1313
--	------------------------	---

RNAV (GPS) RWY 5

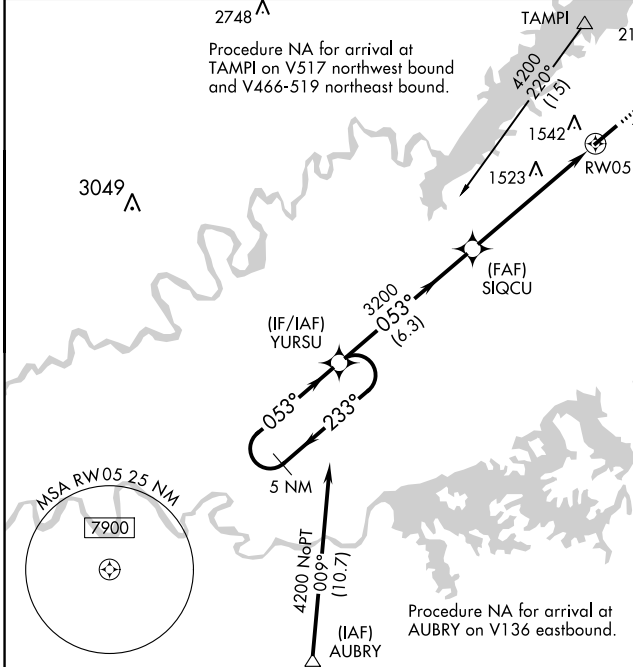
MOORE-MURRELL (MOR)

RNP APCH - GPS.

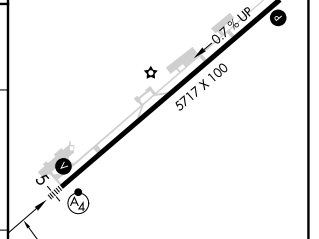
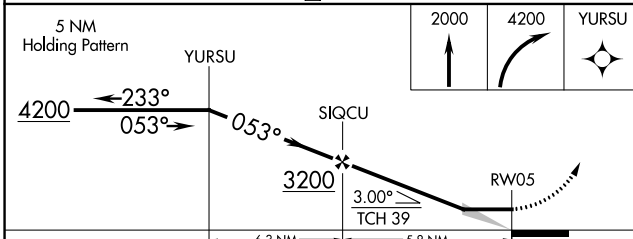
NA When local altimeter setting not received, use Mc Ghee Tyson altimeter setting and increase all MDA 140 feet, increase LP and LNAV Cats C/D visibility $\frac{3}{8}$ SM, increase Circling Cat B visibility $\frac{1}{4}$ SM and Cat C visibility $\frac{1}{2}$ SM. For inop MALSf, increase LP and LNAV Cats C and D visibility to $1\frac{3}{8}$ miles. For inop MALSf, when using Mc Ghee Tyson altimeter setting, increase LP and LNAV Cats C and D visibility to $1\frac{1}{4}$ miles.

MALSf
MISSED APPROACH:
Climb to 2000 then climbing right turn to 4200 direct YURSU and hold.

AWOS-3 126.725	KNOXVILLE APP CON 132.8 360.8	UNICOM 122.8 (CTAF)
--------------------------	---	-------------------------------



ELEV 1313	TDZE 1313
-----------	-----------



CATEGORY	A	B	C	D
LP MDA	1760- $\frac{7}{8}$	447 (500- $\frac{7}{8}$)	1760-1	447 (500-1)
LNAV MDA	1780- $\frac{7}{8}$	467 (500- $\frac{7}{8}$)	1780-1 $\frac{1}{8}$	467 (500-1 $\frac{1}{8}$)
CIRCLING	1880-1 567 (600-1)	2020-1 707 (800-1)	2160-2 $\frac{1}{2}$ 847 (900-2 $\frac{1}{2}$)	2420-3 1107 (1200-3)

REIL Rwy 5-23
MIRL Rwy 5-23

SE-1, 28 NOV 2024 to 26 DEC 2024

SE-1, 28 NOV 2024 to 26 DEC 2024