

WAAS CH 70340 W36A	APP CRS 358°	Rwy Idg TDZE Apt Elev	5001 617 622
--	------------------------	-----------------------------	---

RNAV (GPS) RWY 36

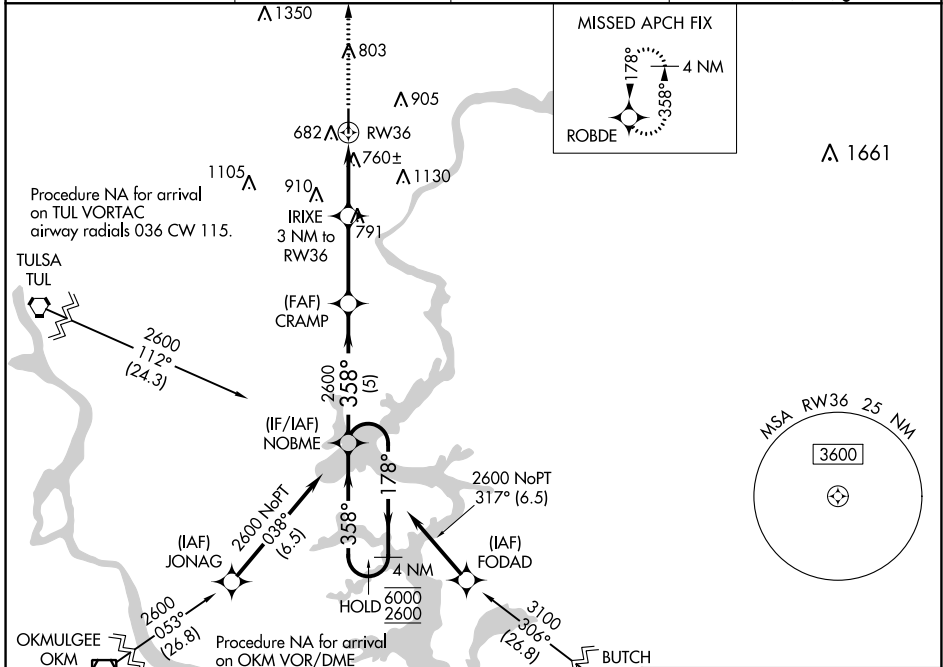
MID-AMERICA INDUSTRIAL (H71)

RNP APCH - GPS.

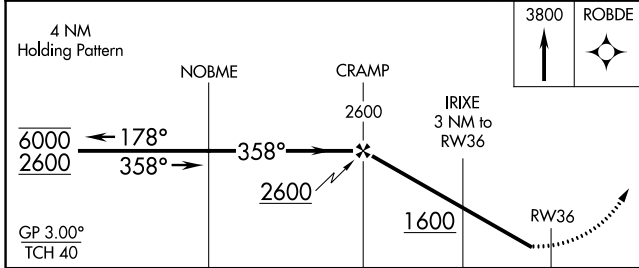
⚠ Rwy 36 helicopter visibility reduction below 1 SM NA. For uncompensated Baro-VNAV systems, LNAV/VNAV NA below -16°C or above 54°C. Procedure NA at night.

MISSED APPROACH: Climb to 3800 direct ROBDE and hold, continue climb-in-hold to 3800.

AWOS 3-PT 120.1	TUL ASOS 124.9 377.2	TULSA APP CON 119.1 360.825	UNICOM 122.8 (CTAF) 0
---------------------------	--------------------------------	---------------------------------------	---------------------------------



ELEV	622	TDZE	617
------	-----	------	-----



3800	ROBDE
81	①
5001 X.72	②
0.4% UP	③
36	④
358° to RW36	⑤
REIL Rwy 18 and 36	⑥
MIRL Rwy 18-36	⑦

CATEGORY	A	B	C	D
LPV DA	938-1 ¹ / ₈ 321 (400-1 ¹ / ₈)			
LNAV/VNAV DA	1131-1 ¹ / ₈		514 (600-1 ¹ / ₈)	
LNAV MDA	1100-1	483 (500-1)	1100-1 ³ / ₈	483 (500-1 ³ / ₈)
C CIRCLING	1200-1	578 (600-1)	1560-2 ³ / ₄ 938 (1000-2 ³ / ₄)	1560-3 938 (1000-3)

SC-1, 28 NOV 2024 to 26 DEC 2024

SC-1, 28 NOV 2024 to 26 DEC 2024