

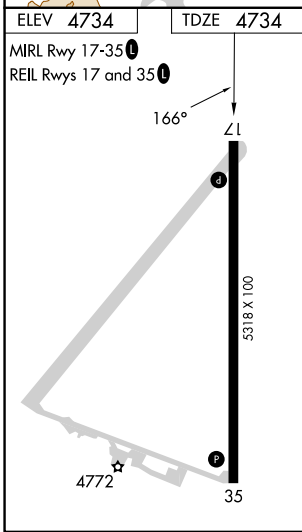
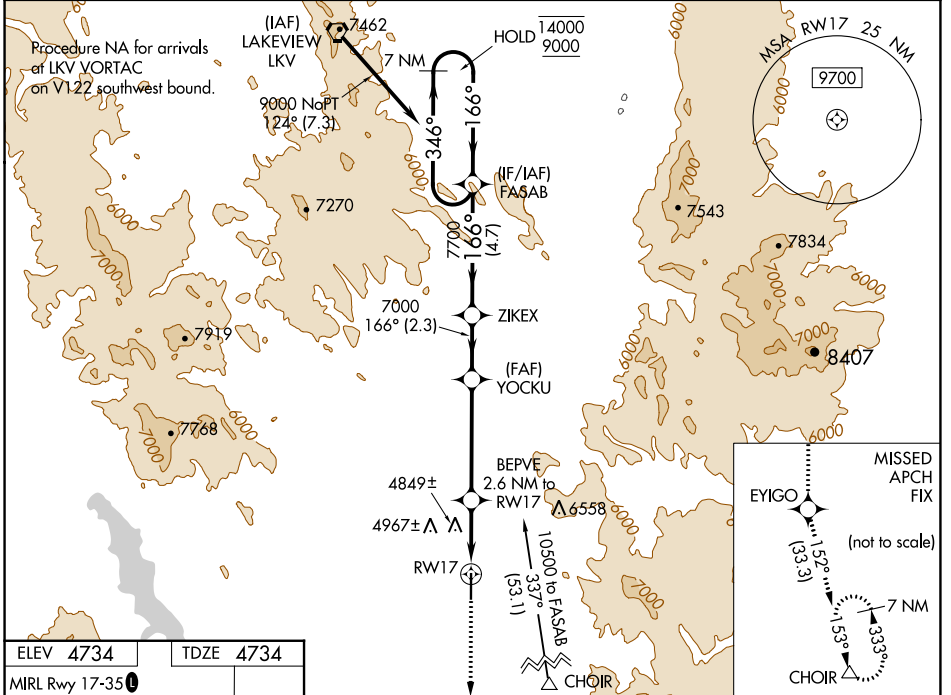
WAAS CH 93532 W17A	APP CRS 166°	Rwy Idg TDZE Apt Elev	5318 4734 4734
--	------------------------	-----------------------------	---

RNAV (GPS) RWY 17

LAKE COUNTY (LKV)

RNP APCH. ▼ ▲ ⚠ -26°C	Circling NA east of Rwy 17-35. For uncompensated Baro-VNAV systems, LNAV/VNAV NA below +24°C or above 50°C.	MISSED APPROACH: Climb to 11000 direct EYIGO and on track 152° to CHOIR and hold.
-----------------------------------	---	---

AWOS-3PT 135.525	SEATTLE CENTER 127.6 346.35	UNICOM 122.8 (CTAF) 0
----------------------------	---------------------------------------	---------------------------------



ELEV 4734	TDZE 4734				
MIRL Rwy 17-35	REIL Rwys 17 and 35				
11000	EYIGO	tr 152°	CHOIR	FASAB	7 NM Holding Pattern
*LNAV only.	BEPVE	YOCKU	ZIKEX		
	2.6 NM to RWY 17	7000	7700	346°	14000/9000
	1 NM to RWY 17	5620	7000	166°	GP 3.00° TCH 45
	1 NM	1.6 NM	4.3 NM	2.3 NM	4.7 NM
CATEGORY	A	B	C	D	
LPV DA	4984-1		250 (300-1)		
LNAV/VNAV DA	5139-1½		405 (500-1½)		
LNAV MDA	5100-1		366 (400-1)		
CIRCLING	5160-1 426 (500-1)	5220-1 486 (500-1)	5460-2 726 (800-2)	5500-2½ 766 (800-2½)	

NW-1, 28 NOV 2024 to 26 DEC 2024

NW-1, 28 NOV 2024 to 26 DEC 2024