

WAAS CH 99332 W35A	APP CRS 346°	Rwy Idg TDZE Apt Elev	5318 4729 4734
--	------------------------	-----------------------------	---

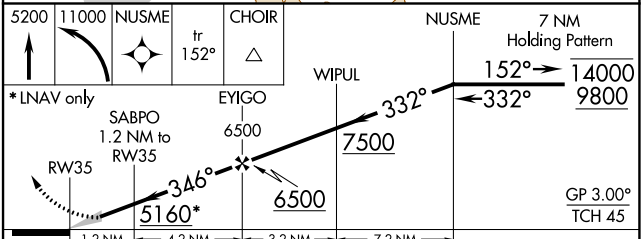
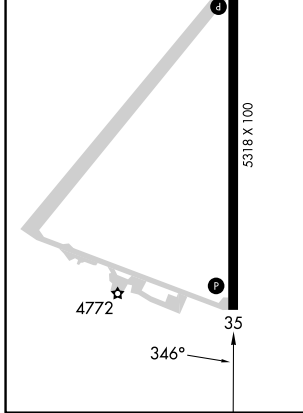
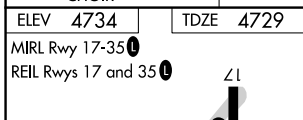
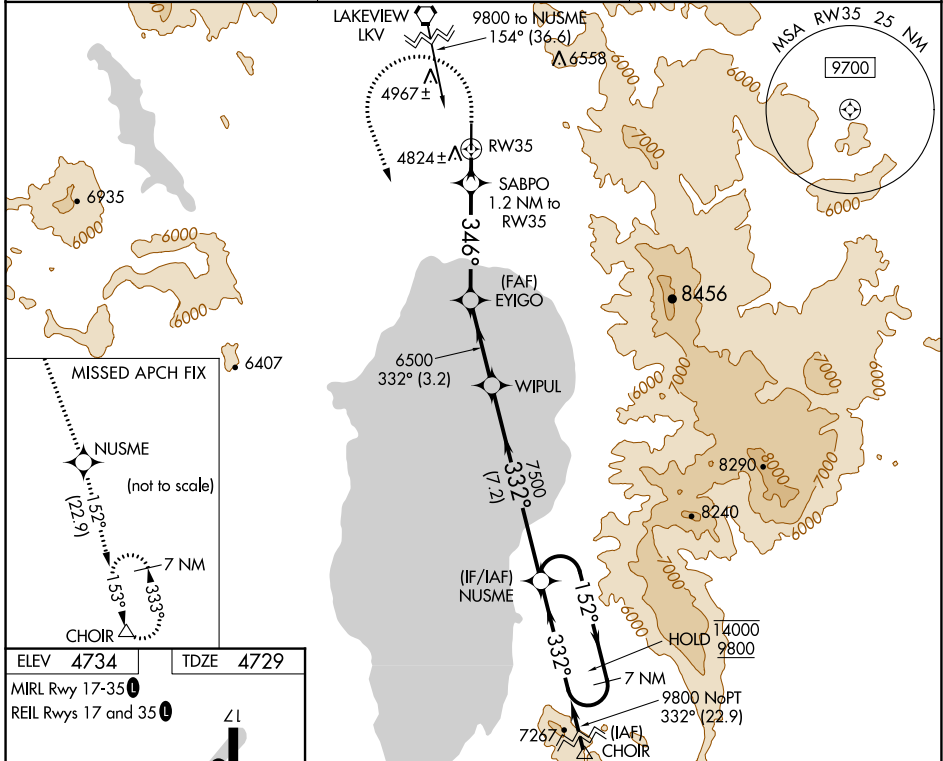
RNAV (GPS) RWY 35

LAKE COUNTY (LKV)

RNP APCH. MISSED APPROACH: (Do not exceed 235K until NUSME) Climb to 5200 then climbing left turn to 11000 direct NUSME and on track 152° to CHOIR and hold.

For uncompensated Baro-VNAV systems, LNAV/VNAV NA below -24°C or above 50°C. Circling NA east of Rwy 17-35.

AWOS-3PT 135.525	SEATTLE CENTER 127.6 346.35	UNICOM 122.8 (CTAF) 0
----------------------------	---------------------------------------	---------------------------------



CATEGORY	A	B	C	D
LPV DA	4979-1 250 (300-1)			
LNAV/VNAV DA	5121-1½ 392 (400-1½)			
LNAV MDA	5080-1 351 (400-1)			
CIRCLING	5160-1 426 (500-1)	5220-1 486 (500-1)	5320-2 586 (600-2)	5480-2½ 746 (800-2½)

NW-1, 28 NOV 2024 to 26 DEC 2024

NW-1, 28 NOV 2024 to 26 DEC 2024