

VOR/DME CTF 114.55 Chan 92(Y)	APP CRS 080°	Rwy Idg 5000 TDZE 239 Apt Elev 239
---------------------------------------------------	------------------------	---------------------------------------------------------------

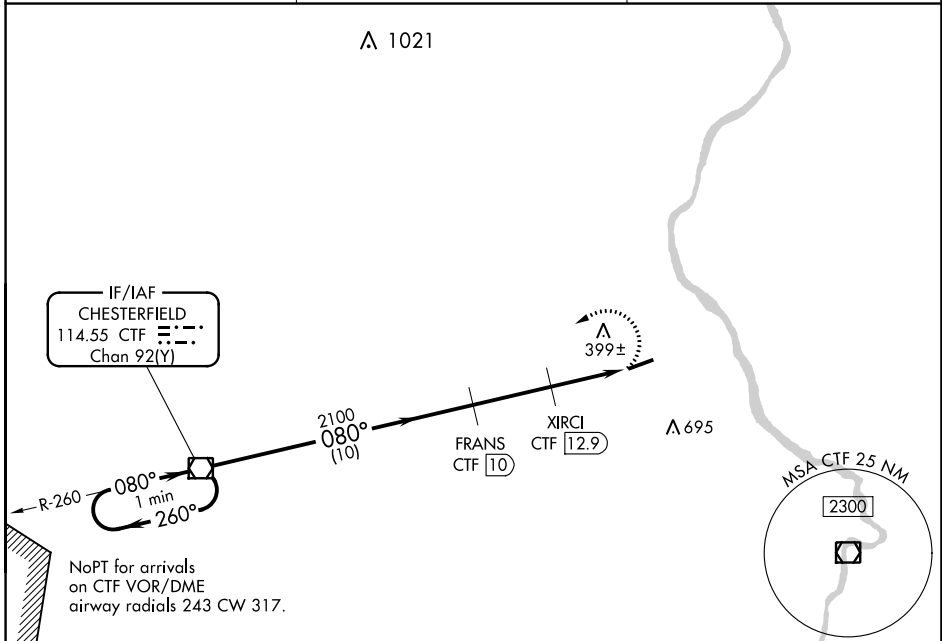
VOR/DME RWY 8

CHERAW MUNI/LYNCH BELLINGER FLD (CQW)

⚠ When local altimeter setting not received, use Darlington altimeter setting and increase all MDA 60 feet, and S-8 Cat C/D visibility 1/8 mile and Circling Cat C/D visibility 1/4 mile. Procedure NA at night. Helicopter visibility reduction below 1 SM NA.

MISSED APPROACH: Climbing left turn to 2100 direct CTF VOR/DME and hold.

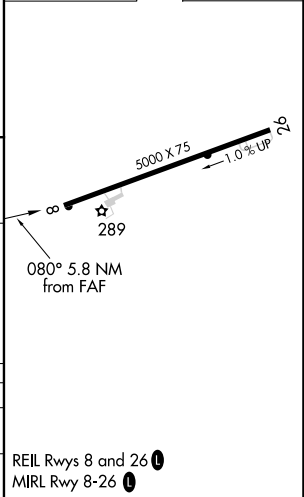
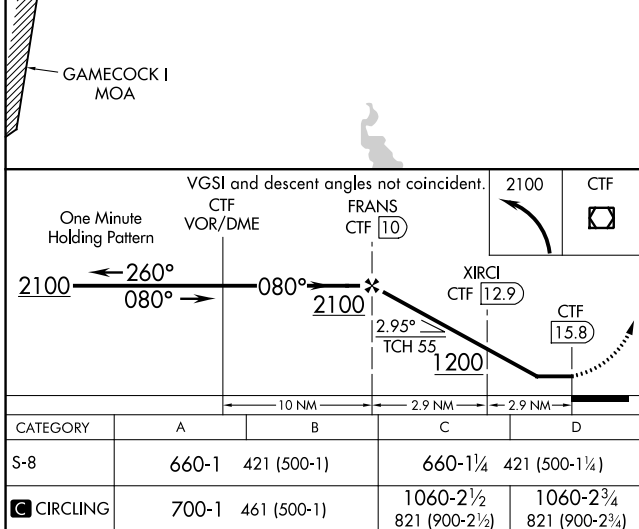
AWOS-3 124.825	FLORENCE APP CON ★ 118.6 341.7	UNICOM 122.8 (CTAF) 0
--------------------------	------------------------------------------	---------------------------------



SE-2, 28 NOV 2024 to 26 DEC 2024

SE-2, 28 NOV 2024 to 26 DEC 2024

ELEV 239	TDZE 239
----------	----------



CATEGORY	A	B	C	D
S-8	660-1	421 (500-1)	660-1¼	421 (500-1¼)
C CIRCLING	700-1	461 (500-1)	1060-2½	1060-2¾
			821 (900-2½)	821 (900-2¾)

REIL Rwys 8 and 26 **0**
MIRL Rwy 8-26 **0**

VOR/DME RWY 8