

APP CRS	Rwy Idg	3621
147°	TDZE	894
	Apt Elev	894

RNAV (GPS) RWY 15

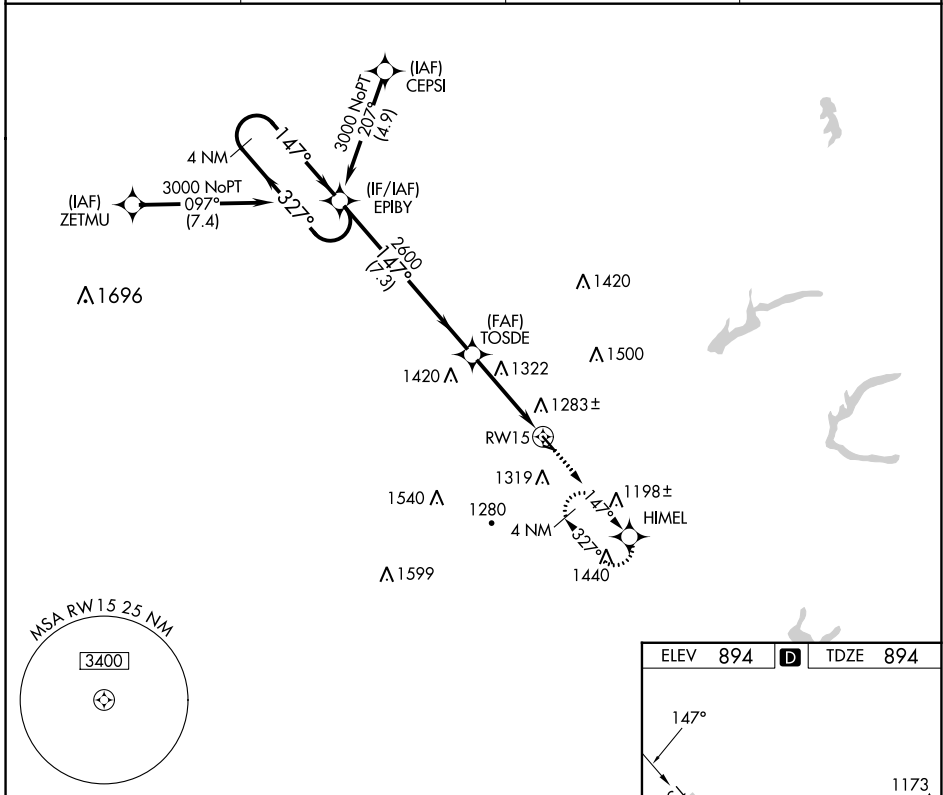
HARRY CLEVER FLD (PHD)

RNP APCH.

▼ Circling NA to Rwys 12 and 30. Procedure NA at night. Rwy 15 helicopter visibility reduction below 1 SM NA.

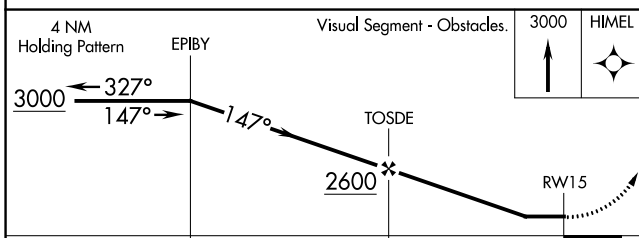
MISSED APPROACH: Climb to 3000 direct HIMEL and hold, continue climb-in-hold to 3000.

ASOS 121.425	CLEVELAND APP CON ★ 125.5 371.875	UNICOM 122.8 (CTAF)	123.3 0
------------------------	---	-------------------------------	-----------------------



EC-2, 28 NOV 2024 to 26 DEC 2024

EC-2, 28 NOV 2024 to 26 DEC 2024



ELEV	894	D	TDZE	894
------	-----	----------	------	-----

Inset diagram showing the final approach to RWY 15. The runway is 3000 ft x 100 ft wide. The taxiway is 1907 ft x 70 ft wide. The approach is from the north, with a 147° heading. Obstacles are marked with altitudes of 928 ft and 1173 ft.

REIL Rwys 15 and 33 **0**
MIRL Rwy 15-33 **0**

CATEGORY	A	B	C	D
LNVA MDA	1580-1	686 (700-1)	NA	
C CIRCLING	1620-1 726 (800-1)	1640-1 746 (800-1)	NA	