

WAAS CH <b>42603</b>	APP CRS <b>053°</b>	Rwy Idg TDZE Apt Elev	<b>5001</b> <b>798</b> <b>802</b>
-------------------------	------------------------	-----------------------------	---

# RNAV (GPS) RWY 5

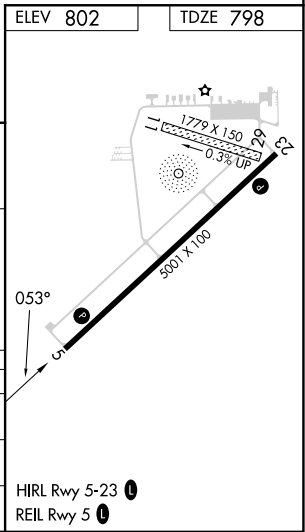
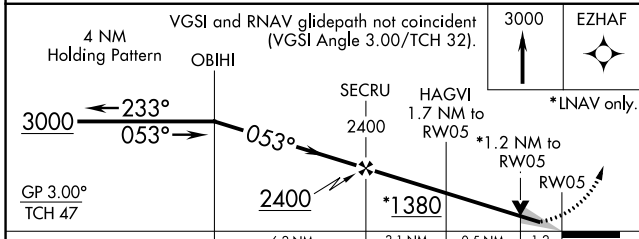
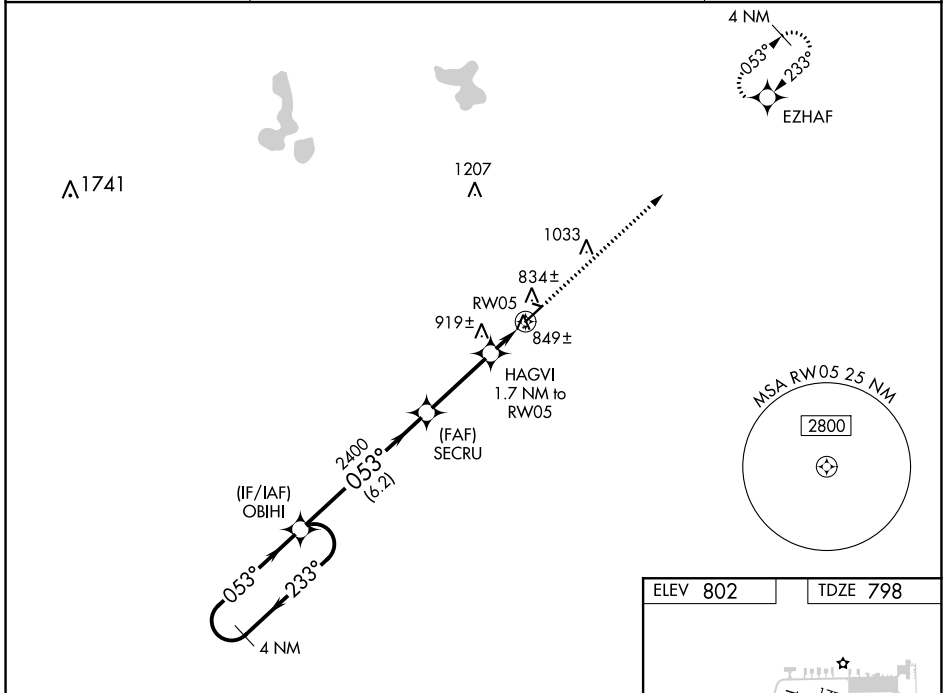
LENAAWEE COUNTY (ADG)

RNP APCH - GPS.

▼ For uncompensated Baro-VNAV systems, LNAV/VNAV NA below -16°C or above 54°C.  
 ▲ When local altimeter setting not received, use Ann Arbor Muni altimeter setting; increase LPV all Cats DA to 1114 feet and all visibilities ½ SM; increase LNAV/VNAV all Cats DA to 1185 feet; increase all MDA 80 feet and visibility LNAV Cats C/D ¼ SM. Baro-VNAV and VDP NA when using Ann Arbor Muni altimeter setting.

MISSED APPROACH:  
Climb to 3000 direct EZHAF and hold.

ASOS <b>118.825</b>	TOLEDO APP CON <b>134.35 317.55</b>	UNICOM <b>122.8 (CTAF)</b>
------------------------	--	-------------------------------



CATEGORY	A	B	C	D
LPV DA	1048-¾		250 (300-¾)	
LNAV/VNAV DA	1119-1¼		321 (400-1¼)	
LNAV MDA	1200-1 402 (500-1)		1200-1¼ 402 (500-1¼)	

EC-1, 28 NOV 2024 to 26 DEC 2024

EC-1, 28 NOV 2024 to 26 DEC 2024