

WAAS CH <b>86505</b> <b>W06A</b>	APP CRS <b>057°</b>	Rwy Idg TDZE Apt Elev	<b>5000</b> <b>302</b> <b>302</b>
--	------------------------	-----------------------------	---

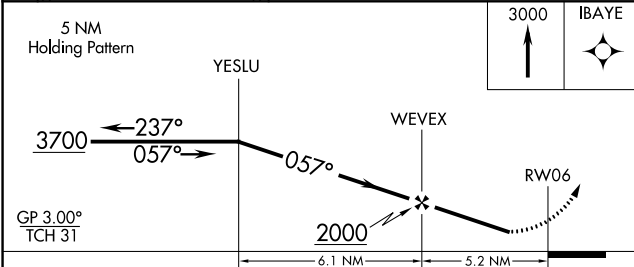
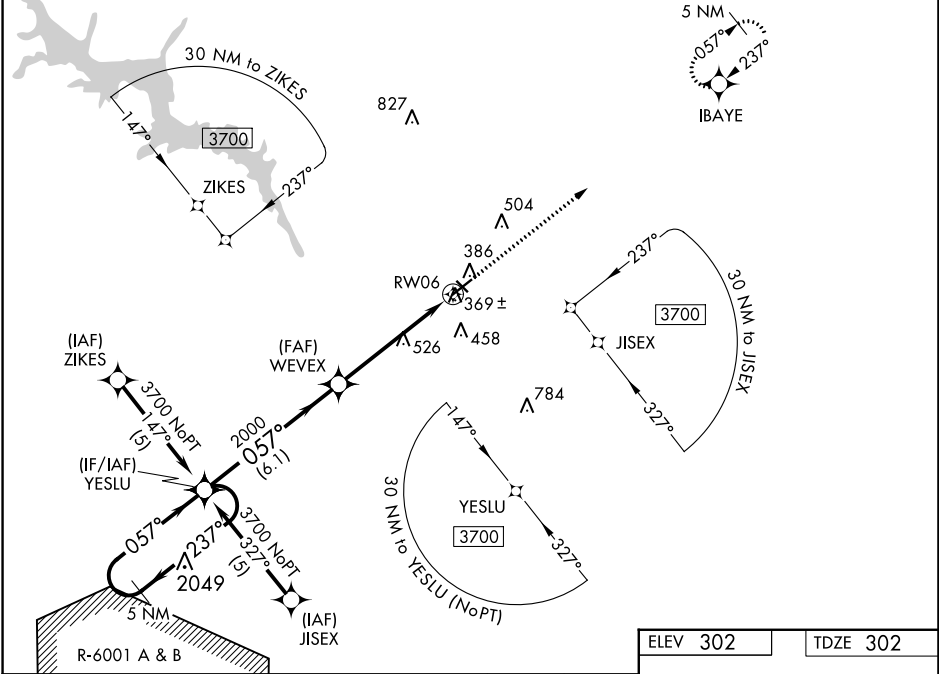
# RNAV (GPS) RWY 6

WOODWARD FLD (CDN)

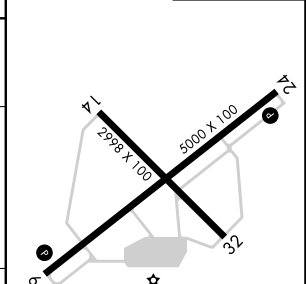
Baro-VNAV NA when using Columbia altimeter setting. When local altimeter setting not received, use Columbia altimeter setting and increase all DAs/MDAs 100 feet; increase LNAV and Circling visibility Cats C/D ¼ SM. For uncompensated Baro-VNAV systems, procedure NA below -15°C (5°F) or above 48°C (118°F). DME/DME RNP-0.3 NA. Visibility reduction by helicopters NA.

MISSED APPROACH: Climb to 3000 direct IBAYE and hold.

AWOS-3PT <b>119.975</b>	SHAW APP CON * <b>125.4 318.1</b>	UNICOM <b>123.0 (CTAF) 0</b>
----------------------------	--------------------------------------	---------------------------------



ELEV 302	TDZE 302
----------	----------



CATEGORY	A	B	C	D
LPV DA	582-1 280 (300-1)			
LNAV/VNAV DA	713-1½ 411 (500-1½)			
LNAV MDA	780-1 478 (500-1)	780-1¼ 478 (500-1¼)	780-1½ 478 (500-1½)	
CIRCLING	840-1 538 (600-1)	840-1½ 538 (600-1½)	900-2 598 (600-2)	

MIRL Rwy 6-24 0  
REIL Rwy 6 and 24 0

SE-2, 28 NOV 2024 to 26 DEC 2024

SE-2, 28 NOV 2024 to 26 DEC 2024