

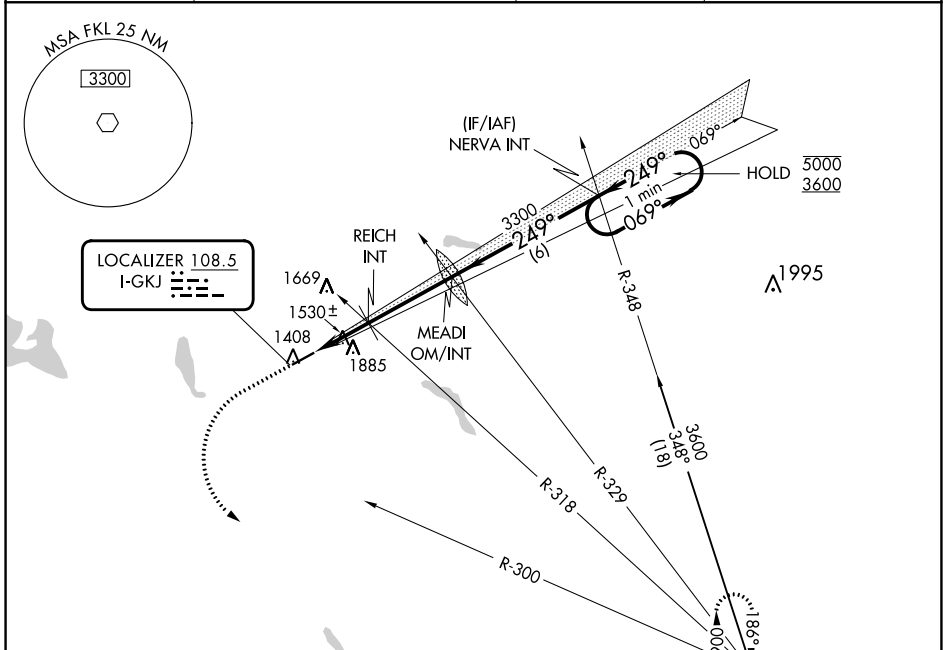
LOC I-GKJ 108.5	APP CRS 249°	Rwy Idg TDZE Apt Elev	5001 1399 1399
---------------------------	------------------------	-----------------------------	-------------------------------------------

LOC RWY 25

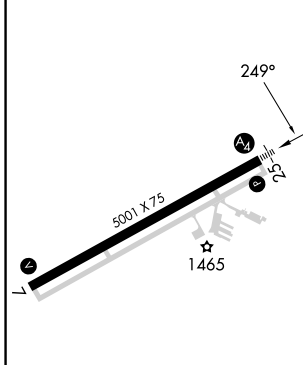
PORT MEADVILLE (GKJ)

RADAR required.		MALS	MISSED APPROACH: Climb to 2000 then climbing left turn to 3600 on heading 125° and FKL VOR R-300 to FKL VOR and hold.
<p>⚠ Inop table does not apply.</p> <p>⚠ Rwy 25 helicopter visibility reduction below 3/4 SM NA.</p>			

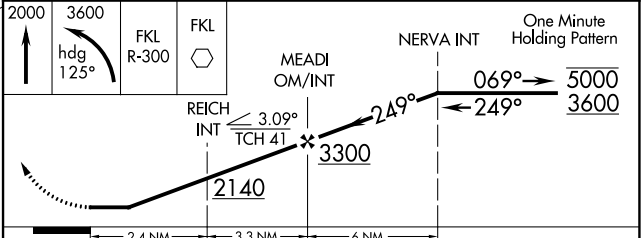
ASOS 121.425	YOUNGSTOWN APP CON * 133.95 322.3	CLNC DEL 124.95	UNICOM 123.0 (CTAF) 0
------------------------	---------------------------------------------	---------------------------	---------------------------------



ELEV 1399	TDZE 1399
-----------	-----------



2000	3600	FKL R-300	FKL	MEADI OM/INT	NERVA INT	One Minute Holding Pattern
↑	hdg 125°					



MIRL Rwy 7-25 0	FAF to MAP 5.7 NM				
Knots	60	90	120	150	180
Min:Sec	5:42	3:48	2:51	2:17	1:54
CATEGORY	A	B	C	D	
S-LOC 25	1780-1	381 (400-1)	1780-1 7/8	381 (400-1 7/8)	
CIRCLING	1900-1 501 (600-1)	2240-1 1/4 841 (900-1 1/4)	2240-2 1/2 841 (900-2 1/2)	2240-2 3/4 841 (900-2 3/4)	

NE-4, 28 NOV 2024 to 26 DEC 2024

NE-4, 28 NOV 2024 to 26 DEC 2024