

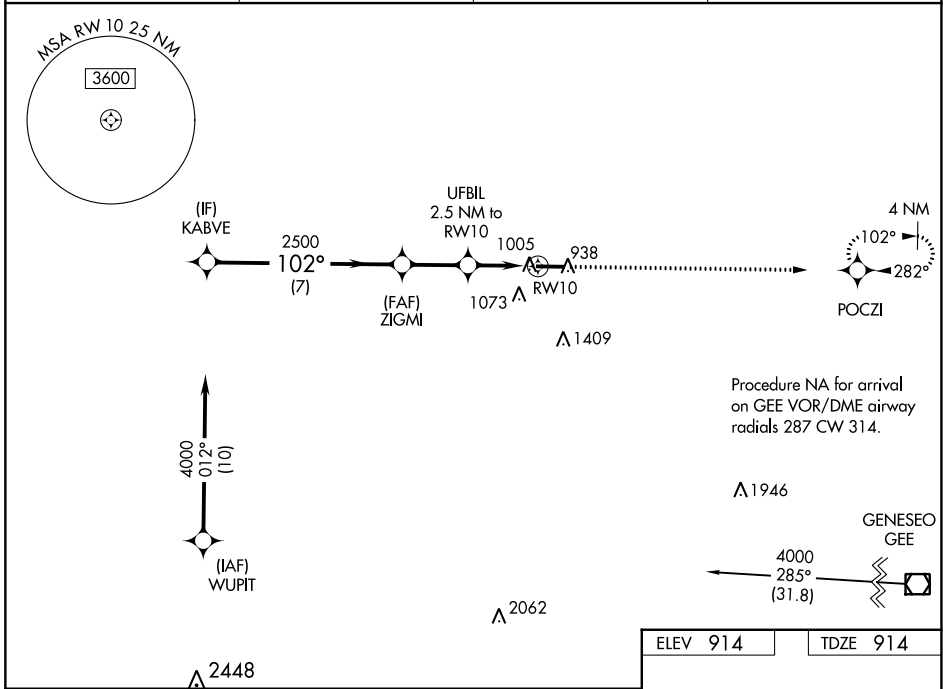
WAAS CH 82421 W10A	APP CRS 102°	Rwy Idg TDZE 914 Apt Elev 914	5499 914 914
--	------------------------	---	---

RNAV (GPS) RWY 10

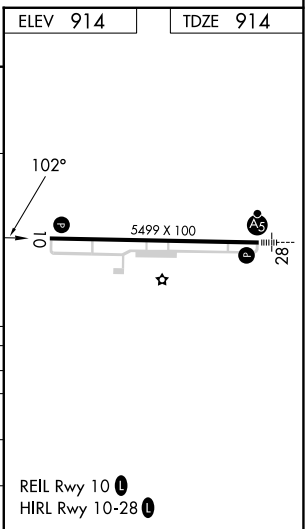
GENESEE COUNTY (GVQ)

RNP APCH - GPS.			MISSED APPROACH: Climb to 3000 direct POCZI and hold.
For uncompensated Baro-VNAV systems, LNAV/VNAV NA below -16°C or above 54°C.			

AWOS-3PT 127.525	ROCHESTER APP CON 123.7 322.3	CLNC DEL 121.8	UNICOM 122.7 (CTAF) 0
----------------------------	---	--------------------------	--



KABVE		ZIGMI		UFBIL 2.5 NM to RWY 10		3000 POCZI	
4000		2500		1740		102°	
GP 3.00° TCH 40		2500		1 NM to RWY 10		RWY 10	
7 NM		2.4 NM		1.5 NM		1 NM	
CATEGORY	A	B	C	D			
LPV DA	1114-3/4		200 (200-3/4)				
LNAV/VNAV DA	1168-3/4		254 (300-3/4)				
LNAV MDA	1260-1		346 (400-1)				
CIRCLING	1380-1	466 (500-1)	1720-2 1/4 806 (900-2 1/4)	1720-2 1/2 806 (900-2 1/2)			



NE-2, 28 NOV 2024 to 26 DEC 2024

NE-2, 28 NOV 2024 to 26 DEC 2024