

WAAS CH 56336 W12A	APP CRS 126°	Rwy Ldg 4000
		TDZE 541
		Apt Elev 547

RNAV (GPS) RWY 12

MUSCATINE MUNI (MUT)

⚠ DME/DME RNP-0.3 NA. Helicopter visibility reduction below 1 SM NA. VDP and Baro-VNAV NA with Iowa City altimeter setting. When local altimeter setting not received, use Iowa City altimeter setting and increase all DA 76 feet and all MDA 80 feet, increase LPV, LNAV/VNAV all Cats visibility ½ mile. For uncompensated Baro-VNAV systems, LNAV/VNAV NA below -16°C (4°F) or above 54°C (130°F).

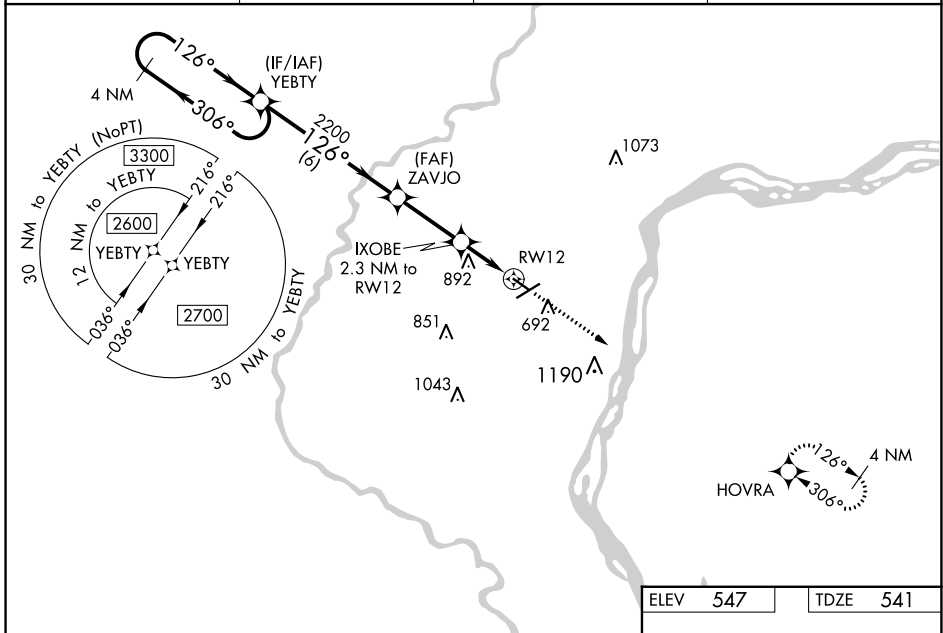
MISSED APPROACH: Climb to 2700 direct HOVRA and hold.

AWOS-3P
120.625

QUAD CITY APP CON *
133.275 257.8

CINC DEL
119.125

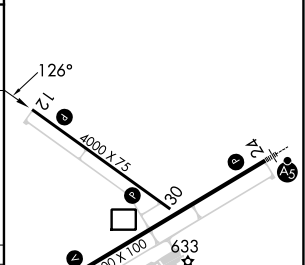
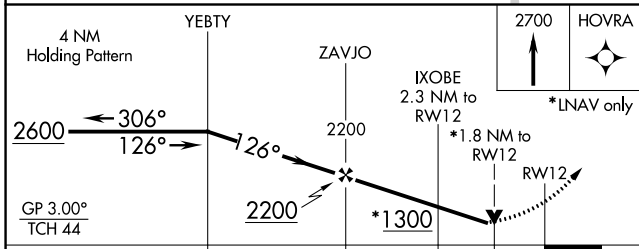
UNICOM
122.7 (CTAF)



NC-3, 28 NOV 2024 to 26 DEC 2024

NC-3, 28 NOV 2024 to 26 DEC 2024

ELEV 547	TDZE 541
----------	----------



CATEGORY	A	B	C	D
LPV DA	1207-2½	666 (700-2½)		NA
LNAV/VNAV DA	1223-2½	682 (700-2½)		NA
LNAV MDA	1140-1	599 (600-1)		NA
C CIRCLING	1140-1 593 (600-1)	1200-1 653 (700-1)		NA

REIL Rwy 6, 12, and 30 **Ⓛ**
MIRL Rwy 6-24 and 12-30 **Ⓛ**