

WAAS CH <b>63105</b> <b>W36A</b>	APP CRS <b>001°</b>	Rwy Idg <b>4997</b> TDZE <b>1181</b> Apt Elev <b>1191</b>
--	------------------------	---

# RNAV (GPS) RWY 36

SMITH FLD (SLG)

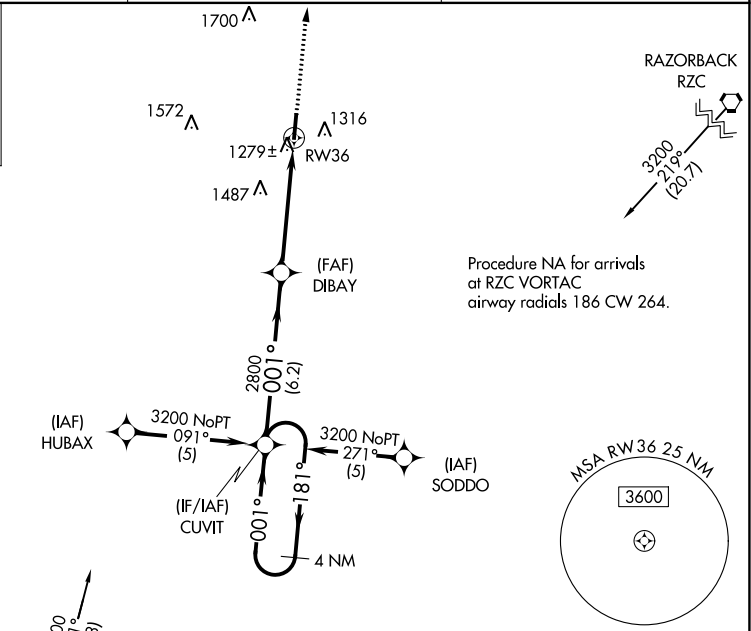
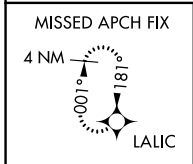
**⚠** When local altimeter setting not received, use Northwest Arkansas MSL altimeter setting and increase LPV DA to 1469 feet, increase LNAV/VNAV DA to 1587 feet; increase all MDAs 40 feet. For uncompensated Baro-VNAV systems, LNAV/VNAV NA below -17°C (2°F) or above 46°C (114°F). DME/DME RNP-0.3 NA. Visibility reduction by helicopters NA. Baro-VNAV and VDP NA when using Northwest Arkansas MSL altimeter setting.

MISSED APPROACH: Climb to 3100 direct LALIC and hold.

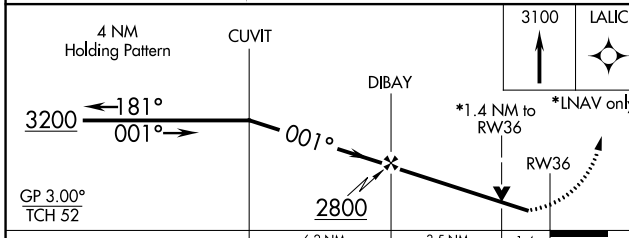
AWOS-3PT  
**118.375**

RAZORBACK APP CON\*  
**121.0 244.575**

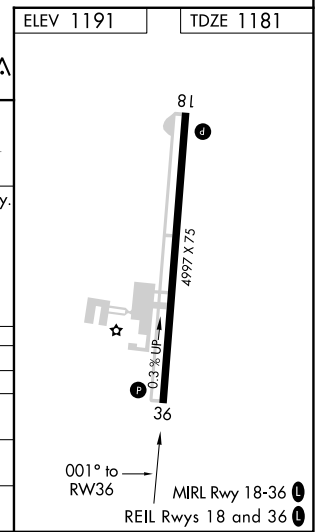
UNICOM  
**122.8 (CTAF) 0**



Procedure NA for arrivals at RZC VORTAC airway radials 186 CW 264.



CATEGORY	A	B	C	D
LPV DA	1431-1 250 (300-1)			
LNAV/VNAV DA	1549-1¼ 368 (400-1¼)			
LNAV MDA	1660-1 479 (500-1)	1660-1¼ 479 (500-1¼)	1660-1½ 479 (500-1½)	
CIRCLING	1660-1 469 (500-1)	1720-1 529 (600-1)	1800-1¾ 609 (700-1¾)	1880-2¼ 689 (700-2¼)



SC-1, 28 NOV 2024 to 26 DEC 2024

SC-1, 28 NOV 2024 to 26 DEC 2024