

WAAS CH <b>69546</b> <b>W32A</b>	APP CRS <b>314°</b>	Rwy Idg TDZE Apt Elev	<b>3604</b> <b>1446</b> <b>1446</b>
--	------------------------	-----------------------------	---

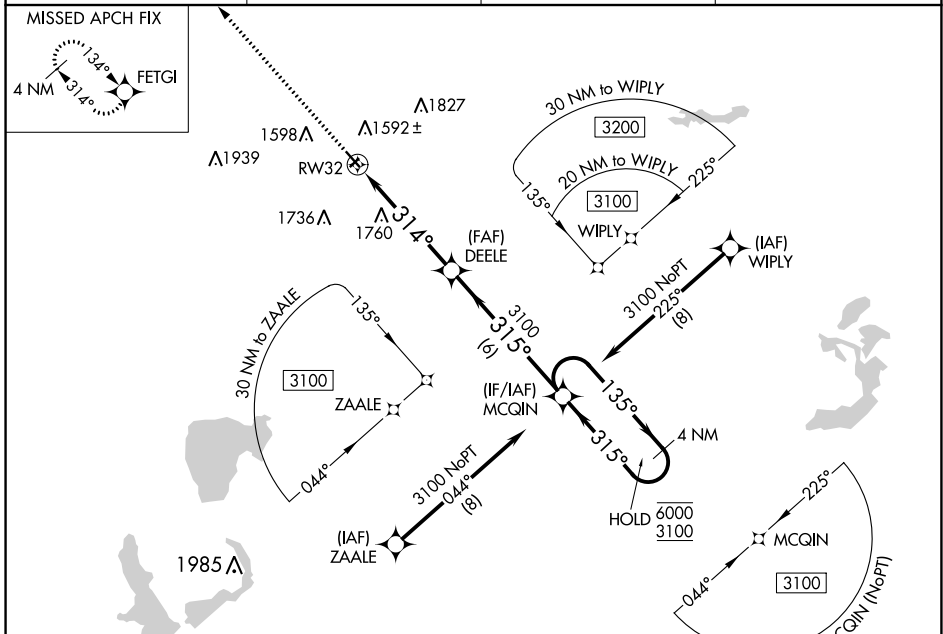
# RNAV (GPS) RWY 32

JACKSON MUNI (MJQ)

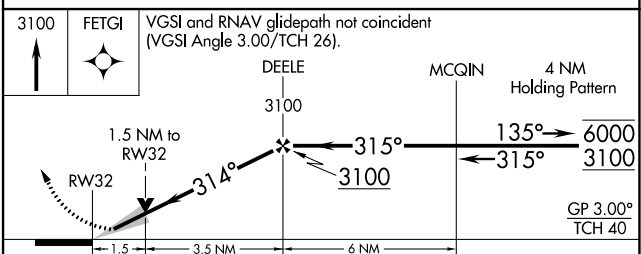
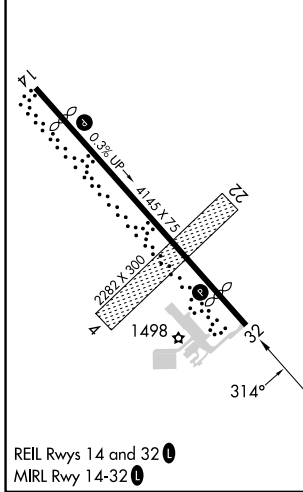
RNP APCH - GPS.

**⚠** For uncompensated Baro-VNAV systems, LNAV/VNAV NA below -17°C or above 54°C. Circling NA to Rwy's 4 and 22.  
**MISSED APPROACH:** Climb to 3100 direct FETGI and hold.

AWOS-3 <b>118.1</b>	MINNEAPOLIS CENTER <b>127.75 257.7</b>	GCO <b>121.725</b>	UNICOM <b>122.8 (CTAF) 0</b>
------------------------	---	-----------------------	---------------------------------



ELEV 1446	TDZE 1446
-----------	-----------



CATEGORY	A	B	C	D
LPV DA	1696-1	250 (300-1)		NA
LNAV/VNAV DA	1960-1 $\frac{3}{8}$	514 (600-1 $\frac{3}{8}$ )		NA
LNAV MDA	1960-1	514 (600-1)		NA
<b>C</b> CIRCLING	2040-1	594 (600-1)		NA

NC-1, 28 NOV 2024 to 26 DEC 2024

NC-1, 28 NOV 2024 to 26 DEC 2024