

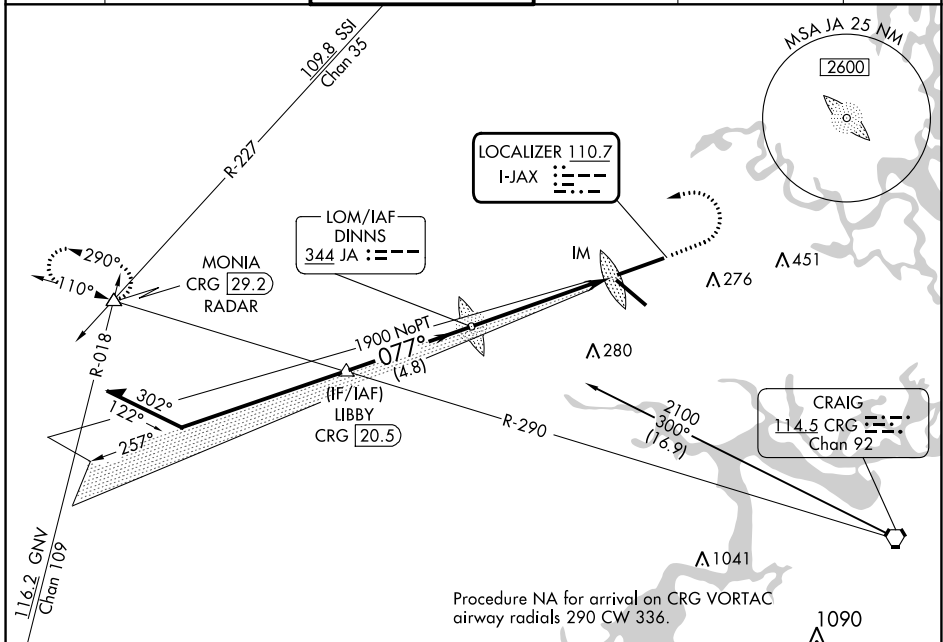
LOC I-JAX <b>110.7</b>	APP CRS <b>077°</b>	Rwy ldg <b>10000</b>
		TDZE <b>30</b>
		Apt Elev <b>30</b>

# ILS Y or LOC Y RWY 8

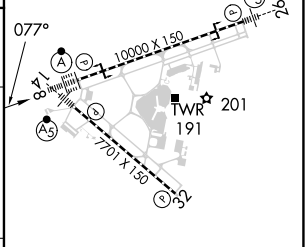
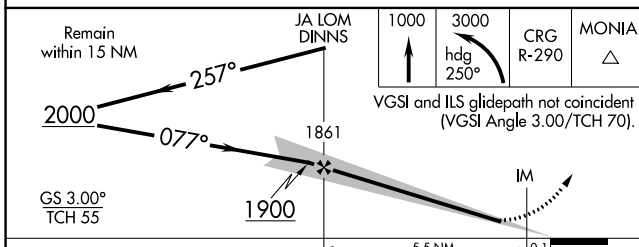
JACKSONVILLE INTL (JAX)

<p>For inop ALS, increase S-ILS 8 Cat E visibility to RVR 4000 and S-LOC 8 Cat E visibility to 1½ SM.</p>	<p>ALSF-2</p>	<p>MISSED APPROACH: Climb to 1000 then climbing left turn to 3000 on heading 250° and on CRG VORTAC R-290 to MONIA INT/CRG 29.2 DME/RADAR and hold.</p>

D-ATIS <b>125.85</b>	JACKSONVILLE APP CON <b>119.0 269.9</b>	JACKSONVILLE TOWER <b>118.3 317.7</b>	GND CON <b>121.9 348.6</b>	CLNC DEL <b>119.5 290.275</b>	CPDLC
-------------------------	--	--	-------------------------------	----------------------------------	-------



ELEV 30	TDZE 30
---------	---------



CATEGORY	A	B	C	D	E		
S-ILS 8	230/18 200 (200-½)						
S-LOC 8	480/24 450 (500-½)	480/45 450 (500-¾)					
CIRCLING	520-1 490 (500-1)	580-1½	580-2	760-2½			
		550 (600-1½)	550 (600-2)	730 (800-2½)			
FAF to MAP 5.6 NM							
		Knots	60	90	120	150	180
		Min:Sec	5:36	3:44	2:48	2:14	1:52

SE-3, 28 NOV 2024 to 26 DEC 2024

SE-3, 28 NOV 2024 to 26 DEC 2024