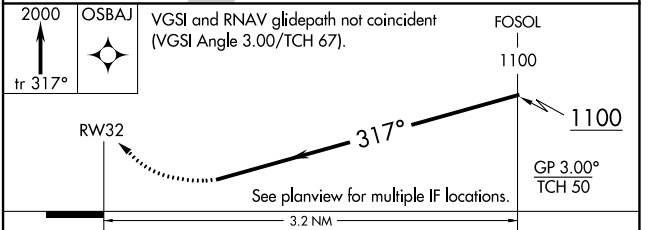
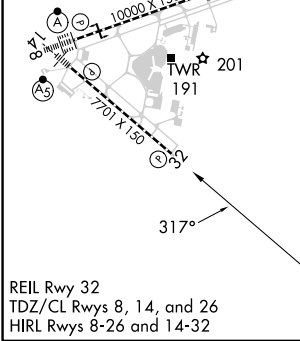
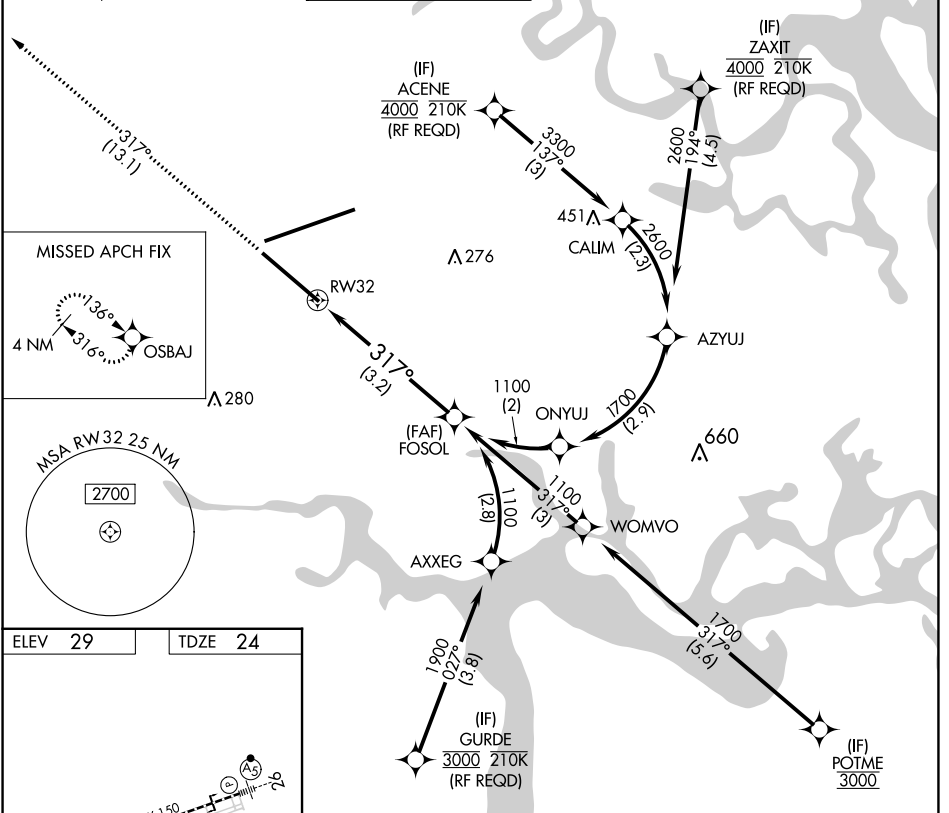


APP CRS	Rwy Idg	7701
317°	TDZE	24
	Apt Elev	29

RNAV (RNP) Y RWY 32

JACKSONVILLE INTL (JAX)

<p>▼ For uncompensated Baro-VNAV systems, procedure NA below -5°C (23°F) or above 54°C (130°F). GPS required.</p>		<p>MISSED APPROACH: Climb to 2000 on track 317° to OSBAJ and hold.</p>			
D-ATIS	JACKSONVILLE APP CON	JACKSONVILLE TOWER	GND CON	CLNC DEL	CPDLC
125.85	119.0 269.9	118.3 317.7	121.9 348.6	119.5 290.275	



CATEGORY	A	B	C	D
RNP 0.11 DA		359-1½	334 (400-1½)	
RNP 0.30 DA		423-1½	399 (400-1½)	

AUTHORIZATION REQUIRED

SE-3, 28 NOV 2024 to 26 DEC 2024

SE-3, 28 NOV 2024 to 26 DEC 2024